

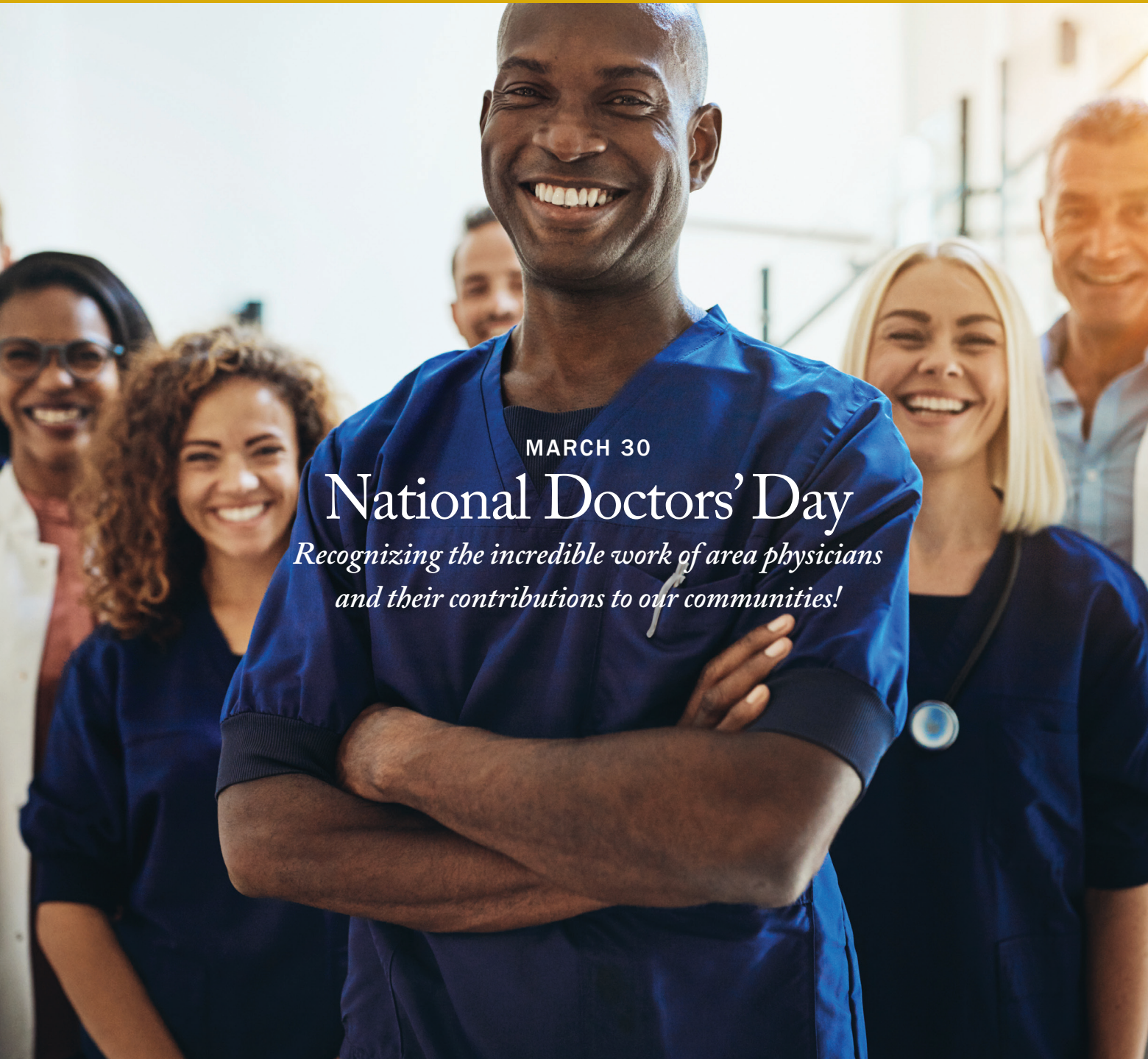


Bulletin

THE OFFICIAL JOURNAL OF THE KENT COUNTY MEDICAL SOCIETY & THE KENT COUNTY OSTEOPATHIC ASSOCIATION

SPRING 2021

– *Serving Physicians in Kent, Ottawa, Barry, Ionia and Montcalm counties* –



MARCH 30

National Doctors' Day

*Recognizing the incredible work of area physicians
and their contributions to our communities!*

PAGE 8
New Members

PAGE 12
Online Education Opportunities

PAGE 27
KCMS Alliance Wins National Recognition

A close-up photograph of a stethoscope with a teal handle and a silver chest piece, resting on a white surface. The background is a soft-focus image of a person's hands in a white lab coat.

MARCH 30 NATIONAL DOCTORS' DAY

To everyone on the front lines in hospitals and practices providing care to patients and protecting our community during this pandemic, thank you! On March 30 and every day, the KCMS and KCOA celebrate a special group of people on National Doctors' Day.

EXCELLENCE. INNOVATION. CARE.



BULLETIN

EDITORIAL COMMITTEE

Gregory J. Forzley, MD — *Editor*
Michelle M. Condon, MD
Patrick J. Droste, MS, MD
Harland T. Holman, MD
Herman C. Sullivan, MD

PUBLISHED BY

Kent County Medical Society &
Kent County Osteopathic Association
233 East Fulton, Suite 224
Grand Rapids, MI 49503
Phone 616.458.4157
Fax 616.458.3305

www.kcms.org • www.kcoa-mi.org

AFFILIATED AGENCIES

Barry County Medical Society
Kent County Medical Society Alliance
Kent Medical Foundation
Ottawa County Medical Society

*All statements of opinions in
The Bulletin are those of the individual
writers or speakers, and do not necessarily
represent the opinions of the Kent County
Medical Society and the Kent County
Osteopathic Association.*

*The Bulletin reserves the right
to accept or reject advertising copy.
Products and services advertised
in The Bulletin are neither endorsed
nor warranted by the Kent County
Medical Society or the Kent
County Osteopathic Association.*

SPRING 2021 • Vol. 106, No. 1

Contents



Note from the Editor

In honor of National Doctors’ Day, Tuesday, March 30, we would like to acknowledge all of our physicians and the critical role they continue to play in caring for our community. On behalf of everyone at KCMS, KCOA, OCMS and BCMS, we extend our thanks to our many gifted physicians for their sacrifice, hard work and continued commitment to excellence.

Your willingness to serve, especially this past year as you have worked tirelessly in response to the COVID-19 pandemic, deserves a special note of thanks and acknowledges you as heroes during this time of domestic and international crisis. Thankfully, there is a bit of light at the end of this year long pandemic tunnel. Our families, loved ones, friends, and neighbors have relied on us to serve as their medical experts in order to keep or make them whole, to heal them, and to offer physical and mental comfort. **Thank you for all your sacrifices and for the high-caliber, compassionate care you provide!**

KCMS

Meetings of Interest	5
President’s Message	6
COVID Resource Center	10
MSMS 2021	16
Legislative Priorities	

KCOA

Meetings of Interest	21
President’s Message	22
MOA Spring CME	23

CONTRIBUTORS

25	Kent Medical Foundation
26	Alliance Heartbeat
28	Kent County Health Department

In Memoriam

FREDERICK A. DOORNBOS, MD

Dr. Frederick Doornbos passed away on Monday, January 11, 2021. After graduating from Grand Rapids Central Christian, he attended Calvin College before attending and graduating from Wayne State University—School of Medicine in 1958. Dr. Doornbos served as a general surgeon for 37 years through private practice at many of the area hospitals, primarily at Grand Rapids Butterworth Hospital (now Spectrum Health), where he was a member of the medical staff from 1963 until his retirement in 1997. In 2005 he was honored by being nominated into the Distinguished Physician Society which recognizes those who went beyond the call of duty, made a significant contribution, and worked courageously and unselfishly to advance the greater mission. Dr. Frederick Doornbos was a member of the Kent County Medical Society since 1959.



Belén Amat, MD is the 2021 KCMS President-Elect.

KCMS Elects Amat as President-Elect

The KCMS Board of Directors has elected Belén Amat, MD for President-Elect of the KCMS for 2021.

Dr. Belén Amat is the founder and owner of Direct Primary Care of West Michigan and is board-certified in internal medicine and pediatrics. Dr. Belén Amat was born and raised in Mexico City, where she studied medicine at the Universidad Panamericana and graduated with honors. She completed her internal medicine and pediatrics residency through GRMEP in affiliation with Michigan State University College of Human Medicine.

Dr. Belén Amat has served as KCMS Secretary/Treasurer and has been a member of the Kent County Medical Society since 2017. Dr. Amat is also involved in Barry County Medical Society, communicating with Barry County members and partnering with other regional medical societies.

**SOLID ADVICE.
REAL SOLUTIONS.**
FOR HEALTH CARE BUSINESS.

At The Health Law Partners, our unparalleled knowledge of the business of health care is coupled with timely, practical solutions designed to maximize value.

The HLP attorneys represent clients in substantially all areas of health law, with particular emphasis on:

- Licensure & Staff Privilege Matters
- Health Care Litigation
- Health Care Investigations
- Civil & Criminal False Claims Defense
- Stark, Anti-Kickback, Fraud & Abuse, & Other Regulatory Analyses
- Physician Group Practice Ancillary Services Integration and Contractual Joint Ventures
- Appeals of RAC, Medicare, Medicaid & Other Third Party Payor Claim Denials & Overpayment Demands
- Health Care Contractual, Corporate & Transactional Matters
- Compliance & HIPAA
- Health Care Billing & Reimbursement

HLP [E] | MICHIGAN NEW YORK
THE HEALTH LAW PARTNERS

TheHLP.com [248.996.8510]

Congratulations

Celebrating Physicians 50 Years in Practice

It is with great pleasure that we celebrate the following physicians for their dedication to their discipline, our Society, the training of new physicians and generosity of care to patients. Thank you!

- Cesar Alcid, MD
- Richard Benninger, MD
- Michael T. Bodley, MD
- Randall W. Green, MD
- Jay Harolds, MD
- Ivars Zadvinskis, MD

KCMS OFFICERS & DIRECTORS

PRESIDENT

Gerald Lee, MD

PRESIDENT-ELECT

Belén Amat, MD

PAST PRESIDENT

Sandy Dettmann, MD

DIRECTORS

Michelle M. Condon, MD

Jayne E. Courts, MD

Megan M. Edison, MD
Member-at-Large

Edward Fody, MD

John Fox, MD, MHA

Warren Lanphear, MD, FACEP

Eric L. Larson, MD
Member-at-Large

Adam J. Rush, MD

5TH DISTRICT DIRECTOR

Anita R. Avery, MD

REGION 8 INTERIM DIRECTOR

Belén Amat, MD

VICE SPEAKER OF THE MSMS HOUSE

Phillip G. Wise, MD

AMA DELEGATE

Rose M. Ramirez, MD

AMA ALTERNATE DELEGATE

Jayne E. Courts, MD

MSMS BOARD OF DIRECTORS,

DESIGNATED DIRECTORS

Donald P. Condit, MD, MBA,
Independent Small Practice Physician

Jayne E. Courts, MD, FACP
At-Large Physician

DELEGATION CHAIR

David Whalen, MD

MSMS DELEGATES TO JANUARY 2022

Patrick J. Droste, MS, MD

Megan M. Edison, MD

Eric L. Larson, MD

Gerald R. Lee, MD

Rose M. Ramirez, MD

Brian A. Roelof, MD

Adam J. Rush, MD

Herman C. Sullivan, MD

John E. Van Schagen, MD

David W. Whalen, MD

Phillip G. Wise, MD

MSMS ALTERNATE DELEGATES TO JANUARY 2022

John H. Beernink, MD

Donald C. Condit, MD, MBA

Michelle M. Condon, MD

Jayne E. Courts, MD

Sandy K. Dettmann, MD

Harlan T. Holman, MD

John B. O'Donnell, MD



Join Us

KCMS MEETINGS OF INTEREST

ONLINE CALENDAR

GET THE LATEST INFORMATION ON KCMS EVENTS

Please check out the events page at www.kcms.org.

MAY 1, 2021

2021 HOUSE OF DELEGATES VIRTUAL MEETING

More information coming soon! Visit www.msms.org.

OUR MISSION:

The Kent County Medical Society is a professional association, uniting the physicians in Kent County into a mutual, neutral organization; preserving and promoting the health of the citizens of Kent County, the physician/patient relationship, the medical profession, and the interests of physicians.

Visit us

For event details, check out our website kcms.org



Check Your Online Referral Guide Information

Have you updated your West Michigan Doctor Referral Guide listing? If you have yet to do so, please visit www.WestMichiganDoctors.com and check to be sure your listing information is up to date. Contact the office at (616) 458-4157 or kcmsoffice@kcms.org with any changes.

PRESIDENT'S MESSAGE



Gerald Lee, MD
2021 KCMS President

FROM HORSES AND BUGGIES TO LAPTOPS

Since 1902, Annual Meeting Evolves— Members Learn ‘State of Society’

It is an honor to represent you as your 2021 President for the Kent County Medical Society. The 118th Annual Meeting was greatly different than those in our history. The first KCMS Virtual Annual Meeting of the Membership was an example of how our Society is able to adapt to meet the needs of our members. Since 1902, KCMS members have gathered, sometimes having arrived by horse and buggy, to learn of the “State of the Society.”

These annual meetings would be an opportunity for members to gather outside of the hospital, enjoy camaraderie and time together, review unique diagnoses and of course, discuss the direction of the KCMS.

I am grateful that those in attendance were used to the minor, unexpected tech issues, but was happy to see the many faces on the screen and to experience the tremendous participation.

That evening, members elected 4 new Board Members—it is always great to have additional voices. I’m proud to welcome Doctors Michelle Condon, John Fox, Warren Lanphear and Adam Rush to the KCMS Board of Directors. They join long-time colleagues whom I have served along side for a few years. I am grateful to my predecessor, Sandy Dettmann, MD and truly appreciate her leadership on the KCMS Board.

While enduring these winter months, hopeful physicians and our community have seen the unveiling of the vaccines to battle COVID-19; and the KCMS has worked to

prepare for 2021. The KCMS will be continuing its Fireside Chat discussions on Equality and Diversity, as well as our Business in Medicine sessions to assist physicians and office managers. The KCMS Legislative Committee will begin meeting) quarterly with elected Legislators in our region. We partner with members and Legislators from Ottawa County and Kalamazoo County to host meetings that provide regional perspective on current issues that impact physician practices and patients.

Our first focus is to represent our region at the MSMS House of Delegates. Volunteer authors have submitted Resolutions for 2021, adding to some that were not submitted in 2020. We will soon know which Resolutions are selected to be reviewed for this year’s House meeting. You will see more information on the House of Delegates in a related story.

Thank you for your trust in my leadership and dedication to this professional organization. I welcome your input and your suggestions as to what you find important and how the KCMS can assist you.



HIGHLIGHTS

Annual Meeting

- Key participants of the KCMS Annual Meeting met in masks in a socially-distanced, conference setting to facilitate the first ever, virtual Annual Meeting of the KCMS Membership. Dr. Jayne Courts, KCMS Past President was on hand to administer the Oath of Office to incoming President, Gerald Lee, MD. Dr. Sandy Dettmann was honored and a Past President's Plaque was delivered to her to thank her for her leadership and work on the KCMS Board.
- Updates for the Kent County Medical Society included a review of limited activities for the year 2020, and the work, resources and information that the KCMS Board and Staff shared with members during the COVID-19 pandemic. Financial updates for Kent County Medical Society and the Kent Medical Foundation were reviewed.
- The members voted to approve the 2021 Board of Directors, and 2021 Delegates and Alternate Delegates to the MSMS House of Delegates.



Welcome New KCMS Members

Office and contact information for these members are part of the [West Michigan Doctors Referral Guide](#)

NEW MEMBERS

AIESHA AHMED, MD

Neurology
SHMG Neurology and Epilepsy

RYAN D. ALLOR, MD

Anesthesiology
Anesthesia Practice Consultants

KURT A. ASHACK, MD

Dermatology
Dermatology Associates of West Michigan

EILEEN L. AXIBAL, MD

Dermatology
Dermatology Associates of West Michigan

ANDREW M. BAUDO, MD

Anesthesiology
Anesthesia Practice Consultants

BRENT A. BECKLIN, MD

Internal Medicine/Pediatrics
SHMG Family, Internal & Pediatric Medicine

GREGORY J. BEVER, MD

Ophthalmology
Retina Specialists of Michigan

NATALIE R. BRENDERS, MD

Pediatrics
Forest Hills Pediatric Associates

JEFFRY CHEN, MD

Anesthesiology
Anesthesia Practice Consultants

ERIC Q. CHOW, MD

Radiology
Kent Radiology

MATTHEW E. CHRISTY, MD

Radiology
Advanced Radiology Services

SCOTT J. CRESSMAN, MD

Radiology
Advanced Radiology Services

RYAN C. DAILY, MD

Radiology
Advanced Radiology Services

CAROLINE DALY, MD

Diagnostic Radiology
Advanced Radiology Services

NGA N. DINH, MD

Neonatology
Neonatal Associates

COREY L. FELLOWS, DO

Emergency Medicine
Emergency Care Specialists

JAMIE L. FROST, DO

Radiology
Advanced Radiology Services

LANCE FURUSAWA-STRATTON, MD

Diagnostic Radiology
Advanced Radiology Services

ALISON GEHLE, MD

Pediatrics
Cascade Pediatrics

MEKASHA M. GETACHEW, MD

Radiology
Advanced Radiology Services

MARYAM GHADIMI MAHANI, MD

Diagnostic Radiology/Pediatric Radiology
Advanced Radiology Services

DENIS L. GIBBS, DO

Radiology
Advanced Radiology Services

AARON V. GIBSON, DO

Radiology
Advanced Radiology Services

JASON H. GRIFFITH, DO

Diagnostic Radiology
Advanced Radiology Services

ANTONIA J. HENRY, MD

Colon & Rectal Surgery
Metro Health HealthPark

DAVID A. HOMA, MD

Radiology
Advanced Radiology Services

KATHRYN L. HUMPHREY, MD

Diagnostic Radiology
Advanced Radiology Services

ROMAN E. HYSZCZAK, MD

Diagnostic Radiology
Advanced Radiology Services

RAHEEL JOHN, DO

Radiology
Advanced Radiology Services

TYRE K. JONES IV, MD

Diagnostic Radiology
Advanced Radiology Services

NATHAN J. JORDAN, MD

Diagnostic Radiology
Advanced Radiology Services

PETER A. KNOESTER, MD

Anesthesiology
Anesthesia Practice Consultants

KATHERYN L. KNUDSON, MD

Obstetrics & Gynecology
SHMG Obstetrics & Gynecology

LAKSHMI P. KOCHARLA, MD

Rheumatology
Cancer & Hematology Centers of Western Michigan

BRADLEY H. KRANENDONK, MD

Diagnostic Radiology
Advanced Radiology Services

RICHARD LICHTENBERG, MD

Radiology
Advanced Radiology Services

ANJALI M. MANDER, MD

Radiology
Advanced Radiology Services

CHRISTOPHER MIANECKI, DO

Diagnostic Radiology
Advanced Radiology Services

ZACHARY D. MILLER, MD

Internal Medicine
SHMG Family, Internal & Pediatric Medicine

LYLE S. MINDLIN, DO
Diagnostic Radiology
Advanced Radiology Services

DAVID MITCHELL, MD
Diagnostic Radiology
Advanced Radiology Services

DIANA B. NORDLUND, DO, JD
Emergency Medicine
Emergency Care Specialists

CHIRAG R. PATEL, MD
Interventional Radiology
Advanced Radiology Services

SHIVANG S. PATEL, DO
Diagnostic Radiology
Advanced Radiology Services

MICHAEL V. PERONE, MD
Diagnostic Radiology
Advanced Radiology Services

ERIN M. PETTIJOHN, MD
Hematology/Oncology
Cancer & Hematology Centers of
Western Michigan

BENJAMIN J. POMERANTZ, MD
Diagnostic Radiology
Advanced Radiology Services

NABEEL PORBANDARWALA, MD
Diagnostic Radiology
Advanced Radiology Services

DON H. POWELL, DO
Emergency Medicine
Emergency Care Specialists

ERIK M. RATCHFORD, DO
Urology
Urology Associates of Grand Rapids

HARITHA G. REDDY, MD
Hematology/Oncology
Cancer & Hematology Centers of
Western Michigan

MICHAEL J. RYAN, MD
Diagnostic Radiology
Advanced Radiology Services

JOSEPH R. SCHULTE, MD
Radiology
Advanced Radiology Services

ERIN L. SCHWAB, MD
Hematology/Oncology
Cancer & Hematology Centers
of Western Michigan

ALEXANDER D. SERRA, MD
Diagnostic Radiology
Advanced Radiology Services

ANDREW L. SOCHACKI, MD
Hematology/Oncology
Cancer & Hematology Centers
of Western Michigan

CHARLES SWALLOW, MD
Diagnostic Radiology
Advanced Radiology Services

WEND ANN THOMAS BROWN, MD
Diagnostic Radiology
Advanced Radiology Services

KIMBERLEE A. TOMERLIN, DO
Internal Medicine
East Paris Internal Medicine Associates

REBECCA A. VAN VALKENBURG, DO
Obstetrics & Gynecology
SHMG Obstetrics and Gynecology

JOEL T. VANDERLUGT, MD
Radiology
Advanced Radiology Services

CHRISTA M. VAUGHN, MD
Anesthesiology
Anesthesia Practice Consultants

STEPHEN R. VOSSLER, MD
Diagnostic Radiology
Advanced Radiology Services

ANDREW M. ZBOJNIEWICZ, MD
Diagnostic Radiology
Advanced Radiology Services

TERRI A. ZOMERLEI, MD
Plastic Surgery
Center for Plastic Surgery

RESIDENT

JACOB BAKER, MD, PHD
Internal Medicine
Spectrum Health Internal Medicine
Residency



Making Custom Medications Since 2001





4021 Cascade Rd. SE
Grand Rapids, MI 49548
616.974.9792

www.keystonerx.com

Compounding Experts | Nationally Accredited | Pharmacist Owned & Operated

NEW AND UPDATED

MSMS COVID-19 Resource Center

MSMS continues to augment and revise resources to meet our members evolving needs as necessitated by the coronavirus pandemic and related statutes, regulations, and guidelines. Two of the more recent additions on the [MSMS COVID-19 Resource Center for Physicians and Patients](#) website are found under the Practice Safe Medicine Toolkit. MSMS Legal Counsel created a template [authorization form](#) for the disclosure of information pertaining to a staff member's COVID-19 positive status or exposure. Additionally, a copy of the [MIOSHA Emergency Rules](#) governing workplace safety requirements for employers has been posted.

Updated Toolkit Templates

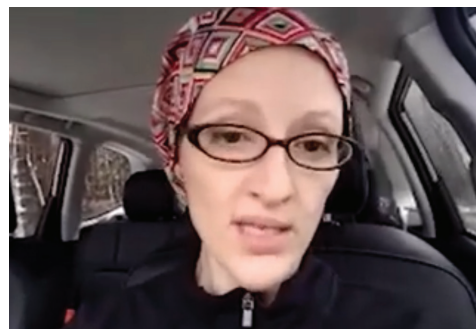
Additional templates recently updated are as follows:

- [COVID-19 Preparedness and Response Plan](#)
(Note: If you own and operate a medical practice, you are required to have a plan.)
- [COVID-19 Sample Employee Screening Form](#)
- [COVID-19 Sample Visitor Screening Policy](#)
- [COVID-19 Sample Symptomatic Employee Screening Form](#)

Vaccine Resources

We have added many resources for the COVID-19 vaccine:

- [Communicating with COVID-19 Vaccine-Hesitant Patients: Top Tips](#)
- [FAQs About COVID-19 Vaccinations](#)
- [COVID-19 Vaccine Provider Preparations](#)



DIANA NORDLUND, DO, JD

KCMS member and emergency medicine physician (Emergency Care Specialists)

West Michigan ER Physician supports vaccines

Finally, there is a [new compilation](#) video highlighting video messages from MSMS members working on the frontlines in the fight against the pandemic. The video public service announcements have been running on digital platforms statewide and feature frontline physicians from across the state, including KCMS member Diana Nordlund, DO, JD.



NIRALI BORA, MD
KCHD Medical Director

Whitmer Appoints Dr. Bora to Protect Michigan Commission

We're proud to congratulate KCMS member and Kent County Health Department Medical Director, Nirali Bora, MD, for being appointed by Governor Gretchen Whitmer to the Protect Michigan Commission.

The Protect Michigan Commission serves in an advisory capacity to Governor Whitmer and the Department of Health and Human Services. The new members are tasked with

providing public leadership to elevate and reinforce the importance of an approved COVID-19 vaccine, identifying barriers that may impede the acceptance of an approved COVID-19 vaccine by Michigan residents, which includes identifying areas or groups within this state that are likely to experience vaccine hesitancy, and develop an outreach action plan designed to overcome these barriers.

Get Involved: Join a KCMS Committee

Committees are an important part of the organizational structure of KCMS. These committees provide a forum for members with varied interests to be involved in the work of the Society. The work that is completed by KCMS committees helps grow and strengthen the Society, the medical profession, and the committee members themselves. The KCMS Board of Directors welcomes members' involvement in committees. The following committees have openings:

EDITORIAL COMMITTEE

Function: To review editorial content and to review the layout and design of the Bulletin. Assist the KCMS staff with edits of the quarterly magazine, the Bulletin, via email and phone.

LEGISLATIVE COMMITTEE

Function: To be patient advocates and to educate area legislators on the effects of proposed legislation on the practice of medicine. The committee meets quarterly on Mondays at noon

and welcomes involvement by elected officials every other month.

MEMBERSHIP COMMITTEE

Function: The Membership Committee shall review all applications for membership, make recommendations of membership to the Board of Directors, have responsibility for retaining members, and conduct an orientation of new members. Members work with KCMS staff by emailed document transfers and phone calls.

Please Contact Us with Questions or to Express Your Interest

If you have any questions or would like more information regarding service on a committee, please contact:

Patricia Dalton
(616) 458-4157
Patricia@kcms.org.

Health Care Experience In Your Corner.®

- Focused on health care law for physicians
- Commercialization of physician inventions and ideas
- Medical staff privileges
- State licensure and payor credentialing
- Employment and shareholder status and compensation
- Payor audits
- PHO, PO and CIN participation

VARNUM
 ATTORNEYS AT LAW



First Tier Ranking in Health Care Law

■ Ann Arbor ■ Detroit ■ Grand Haven ■ Grand Rapids ■ Hastings ■ Kalamazoo ■ Lansing ■ Novi

Contact Scott Alfree at sdalfree@varnumlaw.com





MSMS ON-DEMAND WEBINARS

Click on topic of interest to register online at <https://msms.org/ondemandwebinars>.

The MSMS Foundation has a library of on-demand webinars available, many of which are free, making it easy for physicians to participate at their convenience to meet their educational needs.



Webinars that Meet Board of Medicine Requirements:

- A Day of Board of Medicine Renewal Requirements
- Human Trafficking
- Medical Ethics – Conscientious Objection among Physicians
- Medical Ethics – Confidentiality: An Ethical Review
- Medical Ethics – Decision Making Capability
- Medical Ethics – Eliminating Disparities in Health Care What Can You Do?
- Medical Ethics – Just Caring: Physicians and Non-Adherent Patients
- Medical Ethics – Racial Disparities in Maternal Morbidity and Mortality: A Persisting Crisis
- Medical Ethics – Reclaiming the Borders of Medicine: Futility, Non-Beneficial Treatment, and Physician Autonomy
- Pain and Symptom Management Series
- Balancing Pain Treatment and Legal Responsibilities
- MAPS Update and Opportunities
- Michigan Automated Prescription System (MAPS) Update
- Naloxone Prescribing
- Pain and Symptom Management 2020
- Prescribing Legislation
- Tapering Off Opioids
- The CDC Guidelines
- The Current Epidemic and Standards of Care
- The Role of the Laboratory in Toxicology and Drug Testing
- Treatment of Opioid Dependence
- Update on the Opioid Crisis 2019

COVID-19 Webinars:

- 2020 Fall Symposium on COVID-19 Day One
- 2020 Fall Symposium on COVID-19 Day Two
- 24th Annual Conference on Bioethics
- AMA Advocacy and Physician Resources
- Best Practices for Implementation of Telemedicine
- CARES Act Impact
- CARES Act Impact: Q&A with CPAs
- CARES Act Impact: Q&A with CPAs Part 2
- Leading Through Crises: Financial Guidance and Strategies
- Medical Practices and Employment/ HR FAQs
- New Employment Policies for Practices
- New Waivers and Billing Changes for Telemedicine
- Race Inequalities and COVID-19: Contagion, Severity, and Social Systems
- Safe and Innovative Office Procedures for Seeing Patients
- Telemedicine and Other Technology Codes in a COVID-19 Environment
- Testing, Tracing and Tracking
- The Changing Health Care Landscape: Preventing Diabetes During and Beyond the Pandemic
- What Physicians Need to Know as Employers During the COVID-19 Pandemic

Other Webinars:

- Coding Updates for 2021
- Evaluation Management Updates for 2021
- Health Care Providers' Role in Screening and Counseling for Interpersonal and Domestic Violence: Dilemmas and Opportunities
- HEDIS Best Practices
- In Search of Joy in Practice: Innovations in Patient Centered Care
- Integrating Pharmacists into Practice: The Missing Link for Comprehensive Medication Therapy Management
- Legalities and Practicalities of HIT - Cyber Security: Issues and Liability Coverage
- Legalities and Practicalities of HIT - Engaging Patients on Their Own Turf: Using Websites and Social Media
- Medical Marijuana Law
- Medical Necessity Tips on Documentation to Prove it
- Non-Pharmacologic Management of Musculoskeletal Pain Syndromes
- Section 1557: Anti-Discrimination Obligations
- Sexual Misconduct – Prevention and Reporting
- Update on Chronic Fatigue Syndrome Part 1: Clinical Diagnostic Criteria for Chronic Fatigue Syndrome/CFS now called Myalgic Encephalomyelitis or ME/CFS
- Update on Chronic Fatigue Syndrome Part 2: Uniting Compassion, Attention and Innovation to treat ME/CFS

**To register or to view full course details, visit
<https://msms.org/ondemandwebinars>**

Once registered, you will receive an email within 15 minutes with links to watch the on-demand webinar and to complete the survey evaluation.

Contact: Beth Elliott at 517/336-5789 or bellott@msms.org

CME Opportunity for KCMS Members

2021 Multiple Sclerosis Digital Conference

FRIDAY, APRIL 2, 2021 | 8AM-4:25PM
via Webex from Detroit, MI

TARGET AUDIENCE

Specialties - Family Medicine, Internal Medicine, Neurology

CREDITS

AMA PRA Category 1 Credits™ (6.75 hours), Non-Physician Attendance (6.75 hours)

OVERVIEW

Henry Ford Hospital has gathered some of the finest minds in medicine to discuss the latest research and data surrounding management and treatment of multiple sclerosis presented in a live, virtual format. The intent of this conference is to update attendants on the current practices of the management of MS (including a brief discussion of neuromyelitis optica spectrum disorders [NMOSD]). As well as the management of relapsing remitting

and progressive forms of MS, the diagnosis and management of NMOSD, and management of chronic MS symptoms.

REGISTRATION

To register, please e-mail Henry Ford CME Specialists Kaitlin McConnell (kmccconn3@hfhs.org) or Diana Beydoun (dbeydou2@hfhs.org). Physician Early Bird Pricing - \$75.00 (if registered by March 19); \$90 (after March 19).

Statement of Accreditation: Henry Ford Health System is accredited by the Accreditation Council for Continuing Medical Education to provide continuing medical education for physicians. The ACCME provides oversight and accreditation for organizations which grant Continuing Medical Education (CME) credit to physicians.

Designation Statement: Henry Ford Health System designates this live course for a maximum of 6.75 AMA PRA Category 1 Credit(s)™. Physicians should only claim the credit commensurate with the extent of their participation in the activity.

Medical Students Elect New Leadership

The AMA Members of the MSU-CHM have elected new leadership for 2021. Darian Mills, MSU-CHM 2023 Candidate served as President of the group in 2020 and lead the effort for student volunteering during the COVID-19 pandemic. Darian paved the way for his successor, Tiffie Keung who will serve as President for the group in 2021. She will be assisted with the new Vice-President for the group, Melanie Valentin.



TIFFIE KEUNG
2021 President

Tiffie is a medical student at MSU CHM class of 2024 and the 2021-2022 AMA Co-President. She is passionate about serving underserved communities and understanding health disparities, as a result of her upbringing in Guam. She received her B.S. in Molecular, Cell, & Developmental Biology from UCLA in 2013 and

her M.S. in Cell & Molecular Biology from Tulane University. Tiffie is interested in pursuing Emergency Medicine as a future career path.



MELANIE VALENTIN
2021 Vice President

Melanie is a first-year medical student at MSU-CHM and is the new Vice-President for the Grand Rapids chapter of AMA. She grew up in Southern California with her Mexican-Puerto Rican family and is now enjoying exploring Michigan when she isn't studying. She is interested in practicing family medicine in underserved communities. She is passionate about health care workforce

diversification and health equity and dedicates her time to high school to college/ medical school pipeline programs and advocating for a single-payer health care system.

MSMS Proposed Resolutions for 2021

Thank you to the Kent, Ottawa and Barry County Members who authored 2021 proposed resolutions for the MSMS House of Delegates.

Visit www.kcms.org for more information.

KCMS 2021 NEW & 2020 RE-SUBMITS

- 11-20 Fentanyl Patch for Patch Exchange Program
Original Author: Gerald Lee, MD, Sandy Dettmann, MD, DABAM, FASAM
- 12-20 Non-stigmatizing Verbiage
Original Author: Sandy Dettmann, MD, DABAM, FASAM
- 20-20 Michigan State Medical Society Judicial Commission—Time to Review Due Process
Original Author: Jayne E. Courts, MD, FACP
- 23-20 Patient Safety and Quality of Care - Signage and Preservation of Patient Dignity
Original Author: Jayne E. Courts, MD, FACP
- 24-20 Changing prescription medication pill size
Original Author: Michelle M. Condon, MD, FACP
- 25-20 Limit copay on Emergency Department visits leading to discharge rather than hospital admission
Original Author: Michelle M. Condon, MD, FACP
- 28-20 ICD 10-CM code “statin refusal” for patients that refuse to take a statin
Original Author: Rose Ramirez, MD
- 29-20 Enforce AMA Principles on Continuing Board Certification
Original Author: Megan M. Edison, MD
- 31-20 Bring Insurance Credentialing Into Legal Compliance on MOC
Original Author: Megan M. Edison, MD
- 39-20 End Time Limited Board Certification
Original Author: Megan M. Edison, MD
- Dialysis for Undocumented Patients
Original Author: Michelle M. Condon, MD, FACP
- Electronic issuance of Prescriptions
Original Author: Michelle M. Condon, MD, FACP
- De-professionalization of Physicians
Original Author: Patrick J. Droste, MS, MD
- Medical and Dental Care for Prisoners
Original Author: Patrick J. Droste, MS, MD
- Financial Impact and Fiscal Transparency of AMA CPT Codes
Original Author: Megan Edison, MD
- Compensated Surrogacy in Michigan
Original Author: Adam J. Rush, MD

BCMS 2020 RESUBMIT

- 33-20 Prohibit the denial of referral/orders by out of network Physician
Original Author: Belén Amat, MD

MISEPS SOCIETY

- Revising Driver License Vision Qualifications
Original Author: Patrick J. Droste, MS, MD, MISEPS Delegate

Your

HEALTHCARE LAW FIRM

Wachler & Associates represents healthcare providers, suppliers, and other entities and individuals in Michigan and nationwide in all areas of health law including, but not limited to:

- Healthcare Corporate and Transactional Matters, including Contracts, Corporate Formation, Mergers, Sales/Acquisitions, and Joint Ventures
- Medicare, Medicaid, and Other Third-Party Payor Audits and Claim Denials
- Licensure, Staff Privilege, and Credentialing Matters
- Provider Contracts
- Billing and Reimbursement Issues
- Stark Law, Anti-Kickback Statute (AKS), and Fraud & Abuse Law Compliance
- Physician and Physician Group Issues
- Regulatory Compliance
- Corporate Practice of Medicine Issues
- Provider Participation/Termination Matters
- Healthcare Litigation
- Healthcare Investigations
- Civil and Criminal Healthcare Fraud
- Medicare and Medicaid Suspensions, Revocations, and Exclusions
- HIPAA, HITECH, 42 CFR Part 2, and Other Privacy Law Compliance

WACHLER
ASSOCIATES

wachler.com • 248.544.0888

S E R V I N G H E A L T H C A R E P R O V I D E R S F O R O V E R 3 0 Y E A R S

MSMS 2021 LEGISLATIVE PRIORITIES

The following are the legislative issues we are prioritizing in 2021. The majority of our resources and efforts will be dedicated to action on these issues.

Prior Authorization and Step Therapy Reform

The prior authorization process diverts valuable resources away from direct patient care, can delay the start or continuation of necessary treatment, and can negatively impact patient health outcomes. Step therapy, also known as fail first, is another practice that disrupts patient care by requiring patients to try other therapies before being approved for the treatment that their doctor originally prescribed. MSMS will work closely with the Legislature, regulators and stakeholders on ways to streamline, standardize and make the prior authorization and step therapy process more transparent, clinically appropriate, and evidence based.

POLICY OBJECTIVE: Reform prior authorization and step therapy with a focus on clinical validity, continuity of care, transparency and fairness, and timely access and administrative efficiency.

ACTION: Advocate for legislation to reform prior authorization and step therapy, including efforts that promote transparency, appropriate clinical decision-making, and timely processing of requests.

Team-Based Care/ Scope of Practice

Patients are best served by a team-based approach that provides the maximum amount of choice for their care while ensuring that they benefit from the additional training and expertise having a physician on the team. A highly functioning health care team is the best way to serve patients while addressing the other access issues, not legislation that creates silos. MSMS will continue to promote the role of the physician as the leader of the health care team and oppose any efforts to expand allied health professionals scope of practice that may put patients at risk.

POLICY OBJECTIVE: Protect the health and safety of patients by opposing efforts of health care practitioners to seek licensure or recognition to perform tasks or procedures for which they lack the education, training or experience.

ACTION: Proactively promote physician-led, team-based care efforts, including holistic approaches to scope of practice and licensure that meaningfully address care.

Telemedicine

While telemedicine provided an avenue for health care providers to safely treat patients during the COVID-19 pandemic, it has proven to be an effective care delivery method that ensures convenient and timely access to patients. Further, regardless of whether a patient receives care in-person or virtually, the standard for medical care does not change. Before the outbreak of COVID-19 insurers previously covered telemedicine visits to varying extents, however, there were often obstacles such as low reimbursement, restrictions on where the patient can be located, and types of services covered. While payers did respond by removing some of the regulatory and administrative burdens during the pandemic, these policies are now reverting to pre-pandemic times.

POLICY OBJECTIVE: Achieve telemedicine parity for payment and services.

ACTION: Advocate for legislation that ensures payment and service parity for the use of telemedicine services in clinically-appropriate scenarios.



Graduate Medical Education

Studies repeatedly demonstrate that one of the best ways to recruit and retain physicians is via local medical schools and residency programs. Graduate Medical Education (GME) helps fill the gap in under-served areas by providing extremely low-cost care to those most in need. Michigan has been a leader in expanding medical school class sizes to address the projected demand for physician services, it is imperative that we continue to fund GME slots to allow these future physicians to learn here in Michigan, train here in Michigan, and stay here in Michigan.

POLICY OBJECTIVE: Recruit and retain medical talent in Michigan through an emphasis on GME funding models that appropriately reflect the health care needs of the state.


ACTION: Advocate for state funding for innovative initiatives, like MIDOCS, which seek to place high need specialties in underserved areas of the state.

Auto No-Fault Reform

Michigan was a leader in providing care to those injured in auto accidents by virtue of our no-fault statute. For 40 years, Michigan required drivers to purchase coverage in the event of a catastrophic injury. Unfortunately, in 2019, Michigan approved a sweeping change to the no-fault law, which will, among other things, have serious consequences for victims of car accidents who will need to access to trauma and rehabilitation care. In addition, the new law will burden taxpayers by allowing the injured to be shifted to the Medicaid program, and it will also increase the uncompensated load and regulatory burden on physicians and facilities.

POLICY OBJECTIVE: Pursue appropriate standards and criteria for utilization review through the Department of Insurance and Financial Services' (DIFS) rulemaking process, including procedures for:

- Acquiring necessary records, medical bills, and other information concerning the treatment, products, services, or accommodations provided;
- Allowing an insurer to request an explanation for and requiring a physician, hospital, clinic or other person to explain the necessity or indication for treatment, products, services or accommodations provided, and;
- Appealing determinations.

ACTION: MSMS will continue to work with its partners in the Coalition for Protecting Auto No-Fault (CPAN) on reforms that bring fairness to insurance rates, increase transparency, crack down on fraud, reduce lawsuits and lower health care prices for accident victims. 

2021 MSMS LEGISLATIVE & REGULATORY PLATFORM

The following provides an overview of some of the top issues that comprise the MSMS legislative and regulatory advocacy platform in 2021. These are the ongoing issues we are monitoring annually on behalf of our 15,000 physician members.

Insurance and Regulatory Advocacy

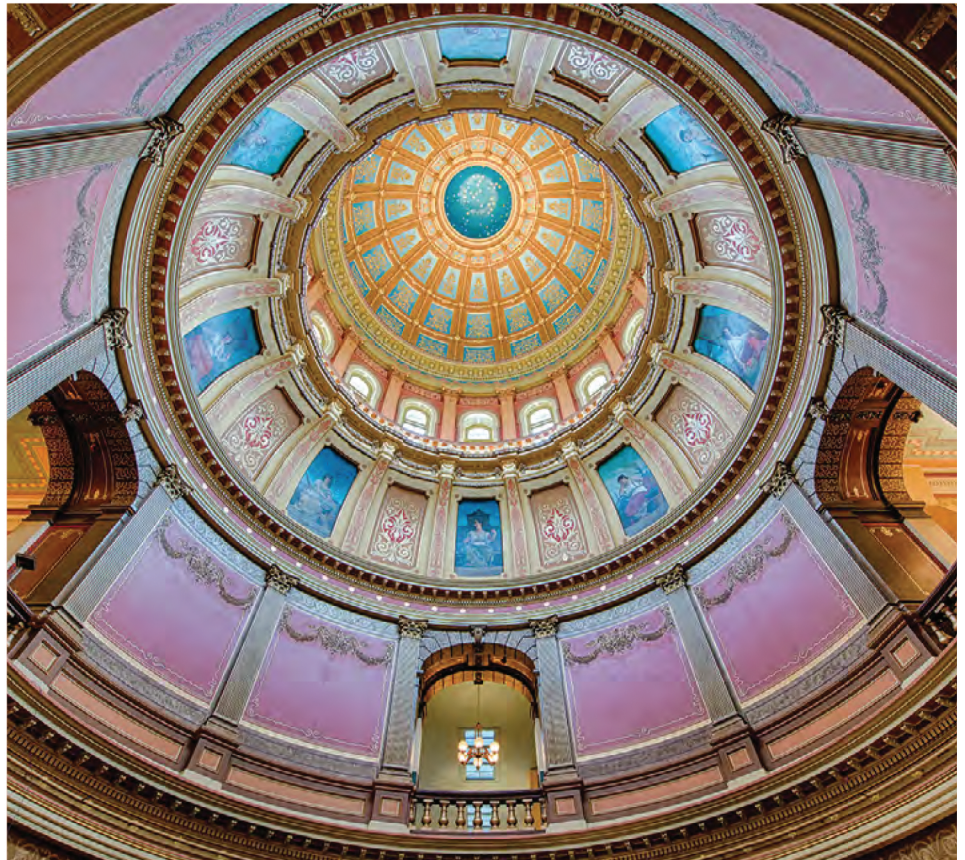
- ◆ Support mental health parity
- ◆ Advocate for adequately sized physician networks
- ◆ Regulate narrow networks
- ◆ Ensure appropriate access to telemedicine
- ◆ Advocate regulation of silent PPO/rental networks
- ◆ Reduce unnecessary administrative costs
- ◆ Ensure payment and service parity for telemedicine

Public Health and Prevention

- ◆ Restore Michigan's helmet law
- ◆ Support vaccine availability and oppose efforts to weaken Michigan's vaccine laws
- ◆ Reduce prescription drug diversion
- ◆ Promote policies advancing health equity goals
- ◆ Reduce childhood environmental hazards
- ◆ Support efforts to reduce unintended pregnancies
- ◆ Support school-based nutrition and exercise standards
- ◆ Reduce gun violence through health screening, patient counseling and expanded access to mental health services

Professional Liability

- ◆ Preserve existing tort reforms
- ◆ Advocate for higher negligence thresholds in medical liability cases
- ◆ Eliminate the lost opportunity doctrine
- ◆ Restore legislative intent of tort reforms related to meaningful caps on non-economic damages
- ◆ Restore legislative intent of tort reforms related to court rules and procedures to level the playing field for physicians
- ◆ Seek pilot projects of medical courts and other non-judicial alternatives to the tort system



Medicaid

- ◆ Seek funding parity with Medicare
- ◆ Oppose taxes that are limited only to physicians
- ◆ Seek funding sources that are fair and sustainable
- ◆ Support state funding for the Healthy Michigan Plan
- ◆ Ensure access to physician-directed care


Insurance Contracting Reform

- ◆ Limit retroactive audit timeframes
- ◆ Support adequate disclosure of fee screens
- ◆ Support appeals process that includes independent reviews
- ◆ Prohibit down-coding in purposes of determining medical necessity

Physician Supply and Training

- ◆ Increase graduate medical education funding at state level
- ◆ Minimize burden of medical school debt

Scope of Practice

- ◆ Support education over legislation as the means of increasing scope of practice
- ◆ Oppose independent prescriptive authority by non-physicians
- ◆ Support the physician-led, team-based approach to health care
- ◆ Support patient right-to-know/health professional credentials disclosure
- ◆ Advocate for liability relief for legislatively mandated standards of practice 


2021 MSMS LEGISLATIVE ACTION AGENDA & STRATEGIES

2021 MSMS Legislative Action Agenda

These specific items align with MSMS's legislative priorities. The majority of our resources and efforts will be dedicated to the following action items:

- ◆ Advocate for legislation to reform prior authorization and step therapy, including efforts that promote transparency, clinically appropriate decision-making, and timely processing of requests.
- ◆ Advocate for payment and service parity for the use of telemedicine.
- ◆ Advance health equity by advocating for policy changes necessary to support public health, address structural determinants of health, and reduce health inequities.
- ◆ Advocate for expanded access to evidence-based, non-opioid therapies and evidence-based treatment for opioid addiction.
- ◆ Pursue legislation that makes maintenance of certification voluntary.
- ◆ Advocate for state funding for innovative health care workforce initiatives, like MIDOCs, which seek to place high need specialties in underserved areas of the state.
- ◆ Advocate for appropriate utilization review standards and criteria under Michigan's new auto no-fault law.
- ◆ Proactively promote physician-led, team-based care legislative and regulatory efforts, including holistic approaches to scope of practice and licensure that meaningfully address to care.
- ◆ Oppose unfunded mandates that could—through additional financial or administrative hurdles—undermine physicians' ability to care for patients.

Strategies for Accomplishing Action Agenda

- ◆ Work closely with county medical societies, physician specialty societies, stakeholder groups and other partners to promote legislative agenda.
- ◆ Continue grassroots efforts on prior authorization and step therapy reform with the Health Can't Wait Coalition.
- ◆ Facilitate physician lobbyist meetings.
- ◆ Facilitate physician engagement with new lawmakers in 2021.
- ◆ Meet regularly with lawmakers and staff to foster relationships, particularly leadership and health policy committees.
- ◆ Prioritize grassroots engagement, including:
 - Lansing Lobby Days
 - Doctor of the Day
 - Very Influential Physician (VIP) Advocate Program
 - In-district "Coffee Hour" lobby day
- ◆ Align MDPAC fundraising strategy with MSMS legislative agenda.
- ◆ Promote member usage of Engage website, including Action Center.
- ◆ Deploy targeted and meaningful Action Alerts to engage physician members on issues.
- ◆ Provide regular legislative updates to membership and county medical societies. 





RISE
UP

Activate your political voice!

The Michigan Doctors' Political Action Committee (MDPAC) is the political arm of the Michigan State Medical Society. It is a bipartisan political action committee made up of physicians, their families, residents, medical students and others interested in making a positive contribution to the medical profession through the political process. MDPAC supports pro-medicine candidates running for political office in Michigan.

Physician engagement is essential to the success of a pro-medicine legislature. Current and potential lawmakers want and need to hear from professionals in the field of medicine. Through MDPAC, you will activate your voice on the things most important to Michigan physicians.

Get started today at MDPAC.org

MDPAC 

Five Reasons to BACK the PAC

The Michigan Doctors' Political Action Committee (MDPAC) builds and maintains strong relationships with lawmakers, as well as candidates running for political office.

As the face of physicians, MDPAC bring **medical knowledge into discussions with political decision makers.**

For more than three decades, MDPAC has mounted successful lobbying efforts on behalf of physicians.

For example... MDPAC protects and strengthens tort reform, stopped the physician's tax, and has helped to stop the expansion of a non-physician's scope of practice.

MDPAC has power, prestige and respect! If you wake your sleeping giant, MDPAC could make rapid, positive change for physicians and patients. It could ease administrative pressures with the current prior authorization process, save you money and time on your Maintenance of Certification, and advance public health issues.

Trial lawyers, insurance companies, and other political opponents raise massive sums of money.

Medicine's friends, through MDPAC, must dig deeper to raise equivalent or greater amounts of funds to advance Michigan physician's agenda.

The current political landscape is uncertain.

Only through a well-funded, **unified voice** will physicians and their patients' interests be heard. MDPAC is that voice.

Get your voice heard by contributing today at MDPAC.org

KCOA OFFICERS & DIRECTORS

PRESIDENT

Adam T. Wolfe, DO

VICE PRESIDENT

Jennifer Hemingway, DO

DIRECTORS

Christopher Barnes, DO

Craig Bethune, DO

Christopher Glisson, DO, MS

Paul Harris, DO

Brad Irving, DO

Norm Keller, DO

Lance Owens, DO

William Sanders, DO

Jacob Stremers, DO

Laura VanderMolen, DO

MICHIGAN OSTEOPATHIC ASSOCIATION

PRESIDENT

Jeffrey D. Postlewaite, DO

SPEAKER OF THE HOUSE

OF DELEGATES MICHIGAN OSTEOPATHIC ASSOCIATION

Craig H. Bethune, DO

MOA DELEGATION

Bradley Clegg, DO

Joanne Grzeszak, DO

Norman Keller, DO

Edward Lee, DO

Gary Marsiglia, DO

C. Eugene Soechtig, DO

Adam Wolfe, DO

John Wolfe, DO



Join Us

KCOA MEETINGS OF INTEREST

ONLINE CALENDAR

GET THE LATEST INFORMATION ON KCMS EVENTS

Please check out the events page at www.kcoa-mi.org.

MAY 13-16, 2021

MOA SPRING ONLINE CME

For more info, visit www.domoa.org/spring.

MAY 22, 2021

MOA HOUSE OF DELEGATES VIRTUAL MEETING

For more info, visit www.domoa.org/hod.

In Memoriam

WILLIAM C. STETTLER, DO

Dr. William Stettler passed away on January 26, 2021. Dr. Stettler received his medical degree from Philadelphia College of Osteopathic Medicine in 1953 and completed his internship at Grand Rapids Osteopathic Hospital (GROH) in 1954. He was a long-time member of the Kent County Osteopathic Association and of the osteopathic principles. Dr. Stettler had a private medical practice in Grand Rapids, where he practiced until his retirement.

Online Referral Guide Changes

The following listing has been updated in the KCMS/KCOA Online Referral Guide. Please visit www.WestMichiganDoctors.com and review your listing. We ask that you contact the office at (616) 458-4157 or kcmsoffice@kcms.org with any changes.

ADAM WOLFE, DO

NEW office address
Metro Health - Beltline
1310 East Beltline SE
Grand Rapids, MI 49506
Phone: 252-1500
Fax: 252-1599.

Refocusing, Reengaging with Your Association



Adam Wolfe, DO
2021 KCOA President,
Board of Directors

As physicians, and as your KCOA Board, we learned many important lessons in 2020 with our generation's management of a world-wide pandemic.

One critical lesson learned is the important role of KCOA in uncovering resources for the practices of our members. From COVID resources, to Small Business Association loans, to personal protective equipment to avenues to federal assistance, KCOA has been an important resource to keep each other safe during these unprecedented times in medicine.

Your county medical society is here to help you navigate your practice—whether you are in training, in practice, or nearing retirement—KCOA and your colleagues are here to help protect you and your patients, as well as your practice at every point in your career.

The KCOA Board of Directors is proud to assist you, provide resources for you and your office, and positively advocate to shape issues in medicine with our fellow legislators. We work to help you overcome the challenges that we all face,

keeping you focused on the joy of the practice of medicine as well your patients' health. Your KCOA board thanks you for all that you continue to do to advance the Osteopathic profession. We continue to be a consistent sounding board for questions that you may have—please do not hesitate to reach out to us at any time!

As a reminder, 2021 KCOA Dues are due immediately. Please visit the KCOA Website to access our safe, "Pay on-line" dues payment option: www.kcoa-mi.org.

The Michigan Osteopathic Association House of Delegates will meet virtually on Saturday, May 22 from 9am–Noon. We hope to provide a socially-distanced Delegation to vote on MOA Resolutions and show our gratitude to KCOA member, Jeffrey Postlewaite, DO who has served as MOA President during one of the most challenging years that our generation has seen.

Dr. Postlewaite Meets with Medical Students

MOA President Jeffrey Postlewaite, DO, joined Michigan State University College of Osteopathic Medicine Dean Andrea Amalfitano to host a "Meet Your MOA President" virtual event.

Over 50 medical students participated in the Q&A session and listened to Dr. Postlewaite and MOA Executive Director Kris Nicholoff talk about the history of the MOA and how students can and should get involved.



MICHIGAN OSTEOPATHIC ASSOCIATION



May 13 - 16, 2021
31 AOA Category 1-A Credits

SESSION HIGHLIGHTS:

- Cardiology
- Infectious Disease
- Hospice Care
- Business of Medicine
- Osteopathic Manipulative Treatment
- Opioid Use Disorders
- Functional & Integrative Medicine
- COVID-19 Update
- Legislative Update
- Risk Management
- Psychiatry
- Geriatrics

VIEW AGENDA & REGISTER ONLINE: www.domoa.org/spring

Login required for member discount. By default, your username is your AOA number.

If you are unsure of your membership status or experience difficulty logging in, please call 800-657-1556.

REGISTRATION (payment on back)

A. CHECK YOUR MEMBERSHIP STATUS Annual membership rates for renewal today

- I am up-to-date on my MOA Membership
- Active Practice _____ \$478
- Retired _____ \$55
- Not a member, do not wish to join today

B. PROGRAM REGISTRATION BY MEMBER TYPE MOA MEMBER

- Active Practice _____ \$700
- Retired _____ \$375
- Life Professional _____ \$250

FYI - Life Professional Members are automatically notified of this achievement once they have paid dues for 35 years and reached 70 years of age. These members no longer pay annual dues and receive a discounted rate on CME activities.

NON-MEMBER

- Osteopathic Non-member _____ \$1,250

PROGRAM SPONSORS

Diamond



Strategic Partners



Beaumont



Sponsors & Education Partners

- American Academy of Osteopathy
- American Osteopathic Association
- Coverys
- Healthcare Partners of Michigan
- Kerr Russell
- Maner Costerisan
- Origami Brain Injury Rehabilitation Center



MICHIGAN OSTEOPATHIC ASSOCIATION



May 13 - 16, 2021
31 AOA Category 1-A Credits

C. REGISTRATION PAYMENT

A + B = _____

All parts of registration (front and back) must be complete for program registration.

Online registration at www.domoa.org/spring | 31 AOA 1-A Credits

Visa, MasterCard, Discover and American Express payment taken by phone, fax or online.

Checks accepted by mail, made payable to MOA. A \$5 service fee has been added to any membership dues payment.

Name _____ AOA Number _____

Email address (REQUIRED - please ensure this is accurate and legible) _____

Billing Address _____

City _____ State _____ Zip _____

Phone _____

Credit card number _____ Exp. date _____ CVW code _____

Accreditation Statement

The Michigan Osteopathic Association (MOA) is accredited by the American Osteopathic Association (AOA) to provide osteopathic continuing medical education for physicians. The MOA designates this program for 31 AOA Category 1-A credits and will report CME with the extent of the physician's participation in this activity.

MDs: The MOA is approved by the Michigan Board of Medicine as an acceptable provider of CME (LARA-LMD-700).

Nurses: The MOA is approved by the Michigan Board of Nursing as an acceptable provider of CME (LARA-LNR-700).

FAQS

FOR UPDATES ON THE ONLINE CME PROCESS & MORE FAQS VISIT WWW.DOMOA.ORG/SPRING

How will I receive all of the information I need to participate?

The first email to be received will confirm registration. A second email from CE21 will include access information.

Is this program open to all healthcare professionals?

Yes, the program is accredited for DOs, MDs, Nurses. Please visit domoa.org/spring for more information and registration.

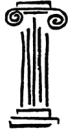
Will the presenters be available for Q&A?

During the sessions presented May 13-16, speakers will be available for live interaction with virtual attendees. Thereafter, questions will be collected through an online submission form and answered via email.

CME INFORMATION

www.domoa.org/cmeinfo

Michigan Osteopathic Association | 2445 Woodlake Circle, Okemos, MI 48864 | P 517-347-1555 | F 517-347-1566 | www.domoa.org



KENT MEDICAL FOUNDATION



Brian Janssen
2021 Kent Medical
Foundation, Board Chair

Thank You Holiday Card Donors

The Kent Medical Foundation Board of Trustees would like to thank you for your continued support! Your contributions to the annual Holiday Card campaign allow us to provide meaningful gifts to our community throughout the year.

KMF

- | | | | |
|---|--|---|---|
| Anonymous | Patricia & Davis Dalton, DO | Norman Keller, DO | Dr. & Mrs. Herman C. Sullivan |
| Dr. Mary Appelt | Alison Dark | Roderick Kim, MD | Wayne & Shelley VanderKolk |
| Jeff & Anita Avery | Patrick & Deborah Droste | David & Maureen Krhovsky | Drs. Doug & Amy Vander Woude |
| Dr. John & Carol Beernink | Dr. Greg & Kathy M. Forzley | Dr. & Mrs. Edward J. Kryshak | Bob & Susan VanTuinen |
| Brad & Irene Betz | Dr. Anthony J. & Linda Nemecek Foster | Thomas & Cynthia Matelic | Michael Votruba |
| William Beute, MD | Vicente & Meridell Gracias | Myrtle McLain, MD | Rik & Kitty Vydareny |
| Nancy & Paul Clodfelder | Dave & Beth Hamm | Judith Meyer, MD | Janet & Jim Watkins |
| Mary & Stephen Cohle, MD | Dr. David & Lorraine Hammond | Paul & Diane Nicholson | Dr. Charles Wilkinson (In loving memory of Patricia Wilkinson) |
| Leonard & Marge Coiner | Dr. & Mrs. Richard A. Horvitz | Jon-Eric & Gina Notarnicola | Dr. Vernon Wendt |
| Don & Sue Condit | Dr. Thienchai & Chalausri Jayasvasti | John & Lynn O'Donnell | Richard Wood, MD |
| Michelle M. Condon, MD | Joe & Beth Junewick | Sally & Larry Robson | |
| Jon & Wanda Cowan | | Dr. Jack & Lija Romence | |
| Drs. Jayne Courts & Rick Hodgson | | Enrico C. Sobong, MD | |

Make a Difference by Joining KMF Board

The Kent Medical Foundation (KMF) is seeking new members to our Board of Trustees. We are looking for board members who believe in our mission and are willing to be active in their governance roles. We believe that this work has never been more important than it is today. We are looking for individuals whose experience and involvement in the community and the medical profession would be a true asset to our Foundation, and

we hope that you will consider a potential position as Board Trustee.

The Board meets four times per year and works to promote the activities of the Kent Medical Foundation and the organizations supported by contributions. If you or someone you know is interested in learning more, please call the KMF office at (616) 458-4157 to speak with Patricia Dalton.



heartbeat



SUHAIR MUALLEM

MESSAGE FROM THE CO-PRESIDENTS

What good news! Distribution of the COVID-19 vaccine has begun. Alliance members are grateful their spouses have received the vaccine and are anxiously awaiting their own vaccinations. We hope this is the beginning of the return to normalcy and the Alliance as usual.

In the meantime, the Alliance is improvising. Instead of a peanut butter tree displayed at a local bank this year due to COVID issues, Peanut Butter was collected at two public drop-off spots, The James Salon and Spa in Ada and Bang Blow Dry Bar and Salon in East Grand Rapids. Three members designated their porches as drop-off points as well. The 293 collected jars of peanut butter went to Feeding America of West Michigan. Also, this year, instead of a holiday open house in a member's home, we Zoomed in our ugly sweaters, shared recipes and won Biggby gift cards. Fortunately, we can be outside, so members enjoyed Michigan winter snowshoeing and cross-country skiing at Indian Trails Golf Course. So nice to get out of the house!



NANCY FODY

Looking forward to being together again,

Suhair Muallem and Nancy Fody, KCMSA Co-Presidents

kcmsa Calendar

- April 20 Book Club**
The Big Burn by Timothy Egan
- April 27 Annual Meeting and Luncheon**
- May 18 Book Club**
Circe by Madeline Miller
- Fall 2021 Labcoats and Libations Fundraiser**
Our major fundraiser has been postponed but is being reinvented as we speak. The Alliance invites you to partner in our mission to connect and grow a healthier Kent County by supporting our mini grant program and Lab Coats & Libations. We need of additional sponsors and door prize donations for this event. If you have an item you would like to donate, please contact president@kcmsalliance.org.

Become a Labcoats & Libations Sponsor!

Partner with The Alliance to connect and grow a healthier Kent County. To become a Labcoats & Libations Sponsor, please contact foundation.president@kcmsalliance.org. Sponsorship levels include:

- **Platinum Sponsor | \$3000**
Recognized as an event sponsor with logo (jpeg format). Admission for ten and free parking for five.
- **Gold Sponsor | \$1500**
Recognized as an event sponsor with logo (jpeg format). Admission for six.
- **Silver Sponsor | \$500**
Recognized as an event sponsor. Admission for two.

Event updates will be posted on Facebook and at www.kcmsalliance.org.

Event Recap winter 2020

December

Peanut Butter Challenge Collection

We collected 293 jars of peanut butter this year which equates to 622 pounds or 10,000 sandwiches!

Our goal was to exceed last year's 9200 sandwiches and we reached it handily! Thank you to members Eileen Brader, Suhair Muallem, Deborah Shumaker, and Jennifer Bruce for your work on this endeavor!



Did You Know? We won the 2020 Social Media Award from AMAA for our Peanut Butter Challenge!

December 29

Holiday Virtual Open House

Members participated in an Ugly Holiday Sweater contest and shared their favorite recipes during our Show and Tell hour.

February 22

Snowshoeing at Indian Trails

Members took in the fresh air and got their hearts pumping snowshoeing at Indian Trails.

Foundation Spotlight

The KCMSA Foundation has awarded four mini-grants this fiscal year. The are as follows:

- **Children's Healing Center**
\$2,500 to cover an annual family membership.
- **Girls On the Run**
\$1,200 to kick start their in-house CPR training by providing money to purchase two adult and two child-sized mannequins.
- **Kids Food Basket**
\$2000 for purchasing fresh produce.
- **Project Child**
\$3000 to be used in promoting flu vaccination among non-English speaking families.



Follow Us!

 **INSTAGRAM**
[@kcmsalliance](https://www.instagram.com/kcmsalliance)

 **FACEBOOK**
[@kcmsalliance](https://www.facebook.com/kcmsalliance)

 **YOUTUBE**
www.kcmsalliance.org



Nirali Bora, MD
Kent County
Health Department
Medical Director and
Brian Hartl, MPH

A COLLABORATIVE APPROACH

Equitable Distribution of the COVID-19 Vaccine

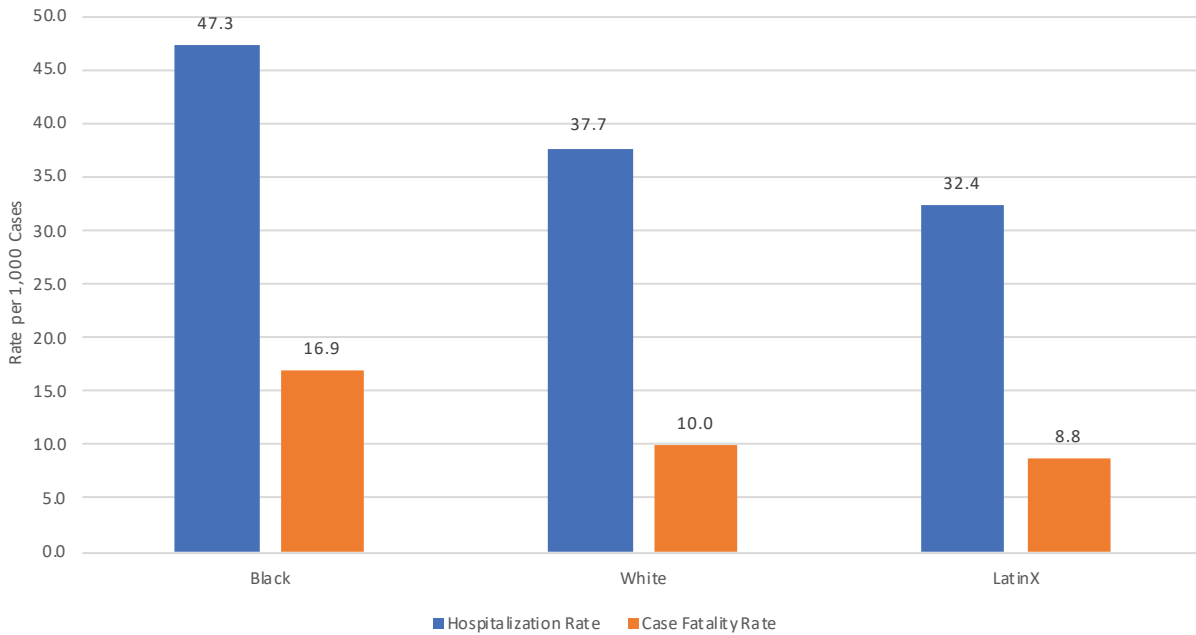
On March 12, 2020, the Kent County Health Department received notification of the county's first case of Coronavirus Disease (COVID-19). Just more than a week later, the first death in a patient diagnosed with COVID-19 was reported. As we approach the one-year anniversary of the arrival of the virus that changed our lives so drastically, there is hope that continued vaccination of individuals will one day put an end to the pandemic that has resulted in nearly 50,000 cases and 650 deaths in our county.

On March 12, 2020, the Kent County Health Department received notification of the county's first case of Coronavirus Disease (COVID-19). Just more than a week later, the first death in a patient diagnosed with COVID-19 was reported. As we approach the one-year anniversary of the arrival of the virus that changed our lives so drastically, there is hope that continued vaccination of individuals will one day put an end to the pandemic that has resulted in nearly 50,000 cases and 650 deaths in our county. As of the writing of this article, over 124,000 individuals in Kent County had received dose one of the vaccine and over 76,000 were fully vaccinated. While public health continues to conduct contact tracing activities to communicate the need for isolation and quarantine to control the spread of infection, it is critical that we work with our community partners to ensure that the latest tool in the fight against COVID-19 is distributed equitably and ethically to all who call Kent County home.

HEALTH DISPARITIES

Racial and ethnic populations in Kent County have suffered disproportionately from COVID-19 with regard to infections, hospitalizations, and deaths based upon county surveillance data. While the infection rate among the Black and White population is similar, the Black population has endured a greater burden with regard to the severity of illness as evidenced by disproportionate rates of hospitalizations and deaths. The hospitalization rate among Blacks is 47.3 per 1,000 cases compared to 37.7 per 1,000 among Whites and 32.4 per 1,000 in the Hispanic population. The case fatality rate of 16.9 per 1,000 cases among Blacks is markedly higher than that of the White (10 per 1,000) and LatinX (8.8 per 1,000) populations. Despite having the lowest hospitalization and case fatality rates, the LatinX community has experienced an infection rate that is significantly higher. The infection rate among LatinX patients is 11,000 per 100,000 population and LatinX patients have accounted for nearly

TABLE 1
COVID-19 Hospitalization and Case-Fatality Rates by Race/Ethnicity



16% of all COVID-19 cases in Kent County throughout the pandemic. One of the most harrowing statistics of COVID-19 is the number of years of potential life that the virus steals from all who succumb to the infection, but most notably members of racial and ethnic populations. The average age at death among White individuals diagnosed with COVID-19 is 80.8 years, compared to 71.2 years among Blacks and 66.1 years in members of the LatinX community.

EQUITY IN VACCINE DISTRIBUTION

As vaccine continues to be a scarce resource, the need for a collaborative approach to vaccine delivery to the county’s most vulnerable populations is critical. To date, collaboration among the Kent County community has been fruitful and led to establishing the West Michigan Vaccine Clinic (WMVC) in the heart of downtown Grand Rapids. While the WMVC is ideal for meeting our goal of efficiency in vaccine distribution, we recognized and heard the need for community vaccination locations to help overcome barriers of transportation, accessibility, and trust. In response, KCHD embraced its role as Chief Health Strategist and engaged health care and community partners in creating the Community COVID-19 Vaccine Planning (CCVP) collaborative. The aim of the collaborative is to identify strategies to deliver vaccine in areas within the



community whose populations have born an undue burden of COVID-19 infections or have challenges accessing vaccine at the larger clinics. The collaborative identified 12 zip codes and one neighborhood where demographic factors (e.g. percentage of non-White populations, poverty, households whose primary language is not English) or high Social Vulnerability Index scores indicated areas of need in which to target efforts to establish community vaccination clinics. The core members of the collaborative meet weekly and participate in five workgroups (Data, Scheduling and Registration, Community Locations, Transportation and

CONTINUED ON PAGE 31



Notifiable Disease Report

Kent County Health Department
700 Fuller N.E.
Grand Rapids, Michigan 49503
www.accesskent.com/health

Communicable Disease Section
Phone (616) 632-7228
Fax (616) 632-7085

December 2020

Notifiable diseases reported for Kent County residents through end of month listed above.

DISEASE	NUMBER REPORTED		MEDIAN CUMULATIVE
	This Month	Cumulative 2020	Through December 2015-2019
AIDS	2	14	10
HIV	3	32	NA
CAMPYLOBACTER	0	37	104
CHICKEN POX ^a	0	5	22
CHLAMYDIA	313	3372	3823
CRYPTOSPORIDIOSIS	0	5	24
Shiga Toxin Producing E. Coli	0	7	16
GIARDIASIS	0	10	36
GONORRHEA	197	1953	1122
H. INFLUENZAE DISEASE, INV	0	3	12
HEPATITIS A	0	0	1
HEPATITIS B (Acute)	0	1	1
HEPATITIS C (Acute)	0	3	0
HEPATITIS C (Chronic/Unknown)	3	83	265
INFLUENZA-LIKE ILLNESS ^b	0	16414	44466
LEGIONELLOSIS	0	7	10
LYME DISEASE	0	11	13
MENINGITIS, ASEPTIC	0	4	35
MENINGITIS, BACTERIAL, OTHER ^c	0	8	17
MENINGOCOCCAL DISEASE, INV	0	0	0
MUMPS	0	0	0
PERTUSSIS	0	2	20
SALMONELLOSIS	0	36	66
SHIGELLOSIS	0	8	20
STREP, GRP A, INV	0	14	29
STREP PNEUMO, INV	0	20	53
SYPHILIS (Primary & Secondary)	0	0	18
TUBERCULOSIS	0	8	12
WEST NILE VIRUS	0	1	0

NOTIFIABLE DISEASES OF LOW FREQUENCY

DISEASE	NUMBER REPORTED Cumulative 2020	DISEASE	NUMBER REPORTED Cumulative 2020
Malaria	3		
Carbapenemase Producing CRE	1		

a. Chickenpox cases are reported primarily from schools. Confirmed and probable cases are included.

b. Includes "Influenza-Like Illness (ILI)" and lab-confirmed influenza. ILI cases have flu-like symptoms and are reported primarily by schools.

c. "Meningitis, Bacterial, Other" includes meningitis and bacteremia caused by bacteria OTHER THAN H. influenzae, N. meningitidis, or S. pneumoniae.

Except for Chickenpox, Campylobacter, Cryptosporidiosis, Shiga-Toxin Producing E. Coli, Salmonellosis, Shigellosis & Influenza-Like Illness, only confirmed cases (as defined by National Surveillance Case Definitions: <http://www.cdc.gov/nndss/script/casedefDefault.aspx>) are included.

Reports are considered provisional and subject to updating when more specific information becomes available.

KCHD

KENT COUNTY HEALTH DEPARTMENT

CONTINUED FROM PAGE 29

Communication) to create comprehensive plans for the administration and monitoring of vaccine in high need populations.

Community collaboration has resulted in several successes to bring COVID-19 vaccine to communities at locations with which they are familiar and comfortable. Spectrum Health has spearheaded several clinics at New Hope Baptist Church located in one of the targeted zip codes identified by the collaborative. Cherry Health has been vaccinating agricultural workers and people experiencing homelessness in addition to their own patients while Mercy Health and Metro Health are able to reach their populations through their health centers that are well trusted and care for patients in areas who have been disproportionately affected by COVID-19. Partnering with community organizations, places of worship, and leaders has been key to overcoming barriers to registration via on-line or telephone mechanisms, especially among those whose primary language is not English. When KCHD heard concerns from members of the Asian community that receiving phone calls from the health department would result in Asian elders not picking up their phones to schedule vaccine appointments, KCHD pivoted and put the registration process in the hands of community connectors to the Vietnamese and Bhutanese populations. These connectors were able to quickly fill appointment slots at community clinics because of the trust they have among community members.

In the coming weeks, several more clinics are scheduled in community locations to serve members of racial and ethnic populations where they are. As we continue these efforts, it is critical that we share data publicly on the administration of vaccine by race/ethnicity to evaluate success and identify opportunities for improvement. KCHD is working with health care partners to obtain the data necessary to create a vaccine dashboard containing this information. The dashboard is available on the county's web site (<https://www.accesskent.com/Health/covid-19-data.htm> - page 7) and will be enhanced with race/ethnicity data as soon as it becomes available. We encourage you to visit and track our collaborative effort to equitably distribute COVID-19 vaccine across the county.

Congratulations!

true.TM
WOMEN'S HEALTH

ON YOUR NEW OFFICE ALONG THE EAST PARIS MEDICAL CORRIDOR!

true. WOMEN'S HEALTH chose First Companies, Inc.!

"We selected First Companies to manage construction because of their reputation. I was aware of them before and had heard about the quality of their work... From the beginning, I felt heard and understood by this team... it was a good partnership."

DR. BITNER, CHIEF MEDICAL OFFICER

Real Estate, Construction & Property Management

ALL UNDER ONE ROOF

For more of our medical professional work, visit:
[firstcompanies.com/construction/medical](https://www.firstcompanies.com/construction/medical)

YOUR SPACE, OUR BUSINESS
www.firstcompanies.com
616.698.5000

KCHD

Helping West Michigan Physicians Gain Access to COVID-19 Vaccine

Across West Michigan, private medical practices—including family/internal medicine and pediatrician offices—say they have been overlooked in the vaccine rollout. These clinicians

“Being part-time and having a risk concern, I appreciate you thinking about us. Your consideration is appreciated. Keep the updates coming!”

care for COVID-19 patients but are often in line for the vaccine after hospital employees. At times, those in private practice have been in line after hospital administrators.

Each state has devised its own vaccine distribution plans, and often, crucial decisions about who gets the vaccine first—and who does not—are made by individual medical facilities or

by local boards of health. This has led to a lot of variation and sometimes a lot of confusion.

Our local Health Departments are aware of the concerns and are working hard to fix them. They point out that

the vaccine rollout is still relatively new, and that the undertaking is enormous.

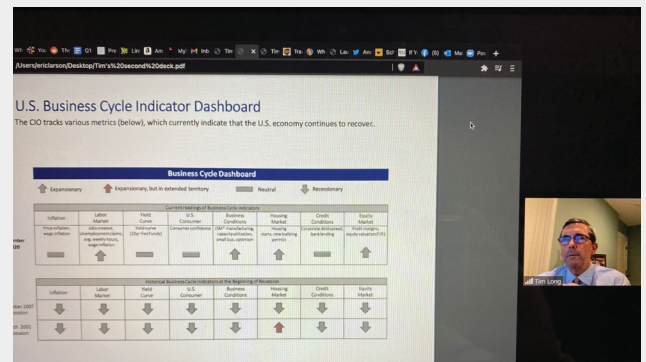
The KCMS/KCOA staff recently reached out to member offices of independent physicians with vaccine resources, etc. Grateful members made our day with positive comments:

- “With all your help we were able to get the staff scheduled! Many, many thanks!”
- “Thank you for thinking of me. As an independent physician, I wasn't sure how or when I'd be able to be vaccinated. Thank you again for not forgetting the independent practices. I appreciate the updates.”
- “Thank you for the updates from the Health Department. It is so easy to miss the important details—I must not be included on the right list. Stay well!”
- “Being part-time and having a risk concern, I appreciate you thinking about us. Your consideration is appreciated. Keep the updates coming!”
- “Thank you for all you do—our team is grateful for watching out for us.”

Thank You for Joining Us for The Business of Medicine Lecture Series

The first KCMS & KCOA Business of Medicine virtual session took place on January 28. We thank our presenter, Tim Long, CIMA; Managing Director, Merrill Lynch, and attendees for joining us for “The Markets and Economy in a Post-COVID Environment.” We learned about the effectiveness of various responses to the economic and market impacts of COVID-19 and what investors can look forward to. We encourage you to reach out to presenter Tim Long with any questions:

Tim Long, CIMA
Managing Director, Merrill Lynch
Phone: (616) 774-4220
E-mail: timothy_long@ml.com



The Boards of KCMS and KCOA work hard to ensure our virtual sessions focus on topics that really matter to our physician members. We want our events to provide practical ideas and expert guidance when our members need it most. Please let us know of any topics that would interest you and any specific areas you would like these sessions to cover. E-mail your thoughts and ideas to us at kcmsoffice@kcms.org. Thank you!