

MEDICINE BEYOND MEDICATION



RETHINKING BRAIN HEALTH



A TWO-DAY CONFERENCE - GRAND RAPIDS, MICHIGAN

OCTOBER 9-10, 2015

FREDERIK MEIJER GARDENS & SCULPTURE PARK

Join us as we focus on the brain and its relationship to overall body, mind and spirit health.

- ✔ Learn from renowned experts and evidence-based presentations
- ✔ Participate in roundtable and panel discussions
- ✔ Experience holistic integrative practices including acupuncture and massage therapy
- ✔ Network with keynote speakers, fellow attendees, and exhibitors
- ✔ Connect with like-minded individuals

KEYNOTE SPEAKERS:



MIMI GUARNERI, M.D., FACC

"Treating the Whole Person: Body, Mind, and Spirit"

Integrative Medicine Pioneer and Bestselling Author



BRIAN LUKE SEAWARD, Ph.D.

"Stress, Digital Toxicity, Neuroplasticity and Mindfulness, Oh My!"

Stress Expert and Bestselling Author



DANIEL AMEN, M.D.

"The Brain Warrior's Way: Protecting the Most Important Part of You"

'America's Favorite Psychiatrist' and 9-Time Bestselling Author



JILL BOLTE TAYLOR, Ph.D.

"Compassion in Medicine"

TED Talk Sensation and Bestselling Author, Harvard-Trained Neuroanatomist



SCHEDULED TO SPEAK

JAY P. SHAH, M.D.

"The Dynamic Role of Sensitization in Chronic Myofascial Pain: Evaluation and Treatment Strategies"

Physiatrist and Clinical Investigator



RICHARD E. HARRIS, Ph.D.

"Impact of Acupressure on the Cancer Symptom Cluster: Mechanisms, Models, and Management"

University of Michigan Professor and Researcher

BREAKOUT PRESENTERS:

HENRY EMMONS, M.D. | LEE MCKINLEY, M.D., FACP | MARY MITUS, R.N., M.S.N., C.C.A.P.
NIKI MUNK, Ph.D, LMT | ROBERT SCHNEIDER, M.D., FACC | TIMOTHY ROYER, Psy.D
CAROL RITBERGER, Ph.D | COCO NEWTON, M.P.H., R.D., C.C.N.

register today!

Standard Rate \$349 (Aug. 1st - Oct. 8th)

At-the-Door Rate \$399 (Oct. 9th - 10th)

Student Registration \$99 (Restrictions Apply)

uhsmi.com/register.html

Application for CME credit has been filed with the American Academy of Family Physicians. Determination of credit is pending. 9.5 CME credits were approved in 2014.

uhsmi.com

FIND US ON:



Universal
HEALTH SOLUTIONS



BULLETIN

EDITORIAL COMMITTEE

Gregory J. Forzley, MD — *Editor*
Michelle M. Condon, MD
Patrick J. Droste, MS, MD
Harland T. Holman, MD
Herman C. Sullivan, MD

PUBLISHED BY

Kent County Medical Society &
Kent County Osteopathic Association
233 East Fulton, Suite 222
Grand Rapids, MI 49503
Phone 616.458.4157
Fax 616.458.3305
www.kcms.org • www.kcoa.us

AFFILIATED AGENCIES

Kent County Medical Society Alliance
Kent Medical Foundation

*All statements of opinions in
The Bulletin are those of the individual
writers or speakers, and do not necessarily
represent the opinions of the Kent County
Medical Society and the Kent County
Osteopathic Association.*

*The Bulletin reserves the right to accept
or reject advertising copy. Products and
services advertised in The Bulletin are
neither endorsed nor warranted by the
Kent County Medical Society or the Kent
County Osteopathic Association.*

Summer 2015 • Vol. 100, No. 3

Contents



KCMS	
Memorials	4
Meetings of Interest	5
A Message to Members	8
Directory Changes	12
KCOA	
Meeting of Interest	14
President's Message	15

Cover Story Page 6

Collegial support help physicians navigate the current United States Healthcare System.

CONTRIBUTORS

10	Kent Medical Foundation
17	Alliance Heartbeat
20	MSU - College of Human Medicine
21	Kent County Health Department

GET INVOLVED:

Learn more about the Kent County Medical Society at www.kcms.org.

Learn more about the Kent County Osteopathic Association at www.kcoa.us.

In Memoriam

ROBERT GOLDBERGER, MD

Dr. Robert Goldberger passed away on June 24, 2015. A Holocaust survivor born in Budapest, Hungary, Dr. Goldberger and his family settled in Detroit, Michigan. He earned his medical degree from Wayne State University School of Medicine and served in Vietnam as a U.S. Army physician during the Vietnam War. Dr. Goldberger worked as an anesthesiologist in private practice in Pontiac and Grand Rapids for 32 years.

LEE R. POOL, MD

Dr. Lee Pool passed away on August 8, 2015. He graduated from Calvin College and received his medical degree from Wayne State University School of Medicine. Following his residency at Butterworth Hospital, Dr. Pool practiced as a surgeon in the Grand Rapids area for 40 years. After retiring from surgery, he continued to work as a physician for Lacks Industries, focusing on industrial medicine.


Welcome to Our Newest Member

OLUFEMI O. SOYODE, MD

(Pediatric Neurology, Epileptology)
Center for Adolescent & Child Neurology
422 Plymouth Ave. NE
Grand Rapids, MI 49505
Phone: 616-294-0010
Fax: 616-828-1802

**LOOK FOR YOUR
2016 DUES
NOTICE SOON**

**Pay your dues by
November 1, 2015,
and receive a
FREE CME COUPON!***



*If you pay your dues prior to November 1, 2015, you will receive a coupon good for one, free CME course during the 2016 membership year (January 1 – December 31, 2016) or one 3-hour course at the 2016 MSMS Annual Scientific Meeting (ASM).

**SOLID ADVICE.
REAL SOLUTIONS.**
FOR HEALTH CARE BUSINESS.

The HLP attorneys represent clients in substantially all areas of health law, with particular emphasis on:

- Appeals of RAC, Medicare, Medicaid & Other Third Party Payor Claim Denials & Overpayment Demands
- Health Care Billing & Reimbursement
- Health Care Contractual, Corporate & Transactional Matters
- Stark, Anti-Kickback, Fraud & Abuse & Other Regulatory Analyses
- Physician Group Practice Ancillary Services Integration & Contractual Joint Ventures
- Health Care Litigation
- Health Care Investigations
- Civil & Criminal False Claims Defense
- Licensure & Staff Privilege Matters
- Compliance
- HIPAA

HLP [E]
THE HEALTH LAW PARTNERS

DETROIT
NEW YORK
CLEVELAND

TheHLP.com [248.996.8510]

KCMS OFFICERS & DIRECTORS

PRESIDENT

David E. Hammond, MD

PRESIDENT-ELECT

Jayne E. Courts, MD

PAST PRESIDENT

Donald P. Condit, MD, MBA

SECRETARY-TREASURER

Herman C. Sullivan, MD

DIRECTORS

Megan Edison, MD

Eric L. Larson, MD

PRESIDENT, MICHIGAN STATE MEDICAL SOCIETY

Rose M. Ramirez, MD

PRESIDENT-ELECT, MICHIGAN STATE MEDICAL SOCIETY

David M. Krhovsky, MD

5TH DISTRICT DIRECTORS

Anita R. Avery, MD

Todd K. VanHeest, MD

DELEGATION CHAIR

Domenic R. Federico, MD

MSMS DELEGATES

TO JANUARY 2016

Lee P. Begrow, DO

R. Paul Clodfelder, MD

Donald P. Condit, MD, MBA

Michelle M. Condon, MD

Patrick J. Droste, MS, MD

David E. Hammond, MD

Brian A. Roelof, MD

MSMS ALTERNATE DELEGATES

TO JANUARY 2016

Mark Clark, MD

Sal F. Dyke, MD

Meg Edison, MD

Clifford B. Jones, MD

Khan Nedd, MD

Angela Oostema, MD

MSMS DELEGATES

TO JANUARY 2017

John H. Beernink, MD

Jayne E. Courts, MD

Paul O. Farr, MD

Domenic R. Federico, MD

John H. Kopchick, MD

Eric L. Larson, MD

John B. O'Donnell, MD

John E. vanSchagen, MD

David W. Whalen, MD

Phillip G. Wise, MD

MSMS ALTERNATE DELEGATES

TO JANUARY 2017

Douglas Ellinger, MD

Tammy Kreuzer, MD

Judith L. Meyer, MD

Ryan K. Miyamoto, MD

Scott Russo, MD

Herman C. Sullivan, MD



Join Us

KCMS MEETINGS OF INTEREST

SEPTEMBER 21, 2015

KCMS SOCIAL

Eve @ The B.O.B., Downtown Grand Rapids | 6 p.m.

NOVEMBER 9, 2015

LEGISLATIVE COMMITTEE LUNCHEON

Masonic Center, 4th Floor | Noon

JANUARY 16, 2016

KCMS ANNUAL MEETING

Calvin College

Details to follow

OUR MISSION:

The Kent County Medical Society is a professional association, uniting the physicians in Kent County into a mutual, neutral organization; preserving and promoting the health of the citizens of Kent County, the physician/patient relationship, the medical profession, and the interests of physicians.

Visit us

For event details, check out our website kcms.org





David E. Hammond, MD
2015 KCMS President,
Board of Directors

PRESIDENT'S MESSAGE

Physicians Adapting to Change

The healthcare world is moving at a speed of lightning pace never seen before and we as physicians are part of it. Change is the new constant and is exciting and frightening at the same time. Life in this fast lane often makes us as physicians feel out of control, and is not for the faint of heart.

The truth about change is it can be invigorating yet challenging or even painful at the same time as it forces us out of our "comfort zones". It makes us feel like a piece of taffy being stretched and pulled in many different directions. Then, as we adjust to the new shape, we are again twisted even more until we hardly recognize who we are or where we came from originally.

Change itself, however, is natural. It has been happening in nature since the beginning of time. Adapting to change in the modern world should be viewed as a "natural thing" to do. It forces us to use our ingenuity to learn new skills in both our personal and professional lives.

We are in the infancy of a new technologically-driven world. No one can really say where it will end because the changes brought on by technology are moving faster than we can anticipate. The growing pains for some of us are tremendous. However, physicians are educated people proficient in science and creative thinking. We

thrive on challenge, like to think, and explore and we definitely know how to persevere.

Change forces us to examine our lives and to pause at times to gain perspective. However, the beauty of human beings is that we are adaptable. Change can cause some of us to walk in place and feel stuck. Others may walk in circles wandering and lost. But physicians are resilient. The best thing for us to do is to proactively keep walking forward even if it takes uncomfortable amounts of effort to do so. It is imperative that we decide how best to transition ourselves to use this knowledge and technology to better serve our patients.

Many of our colleagues fear the continuous changes in health care and look at them with a great deal of pessimism. We must remember, however, that the change is not leaving. About the time we get comfortable with current change the rules and conditions will change again.

Weathering
the storms
of change is going
to be a work in
progress for some
time to come as we all
explore these
new frontiers
together.



I feel we should look at this period of change as a great opportunity for us as physicians to become involved and to take leadership roles to better adapt to these changes. Medicine is not practiced in a vacuum. Therefore, we will benefit more from being more collegial through communication in supporting our colleagues. We must as physicians maintain our faith in the importance of what we do. By keeping and supporting our relations with peers we will more easily achieve our goals of overcoming these many obstacles that tend to interfere with our practices. Remember, the Kent County Medical Society provides an excellent forum to assist in our mutual goals as a profession.

We as physicians navigating the U.S. health care system today is analogous to weathering a storm. Weathering the storms of change is going to be a work in progress for some time to come as we

all explore these new frontiers together. I firmly believe that “together” is the key word in our journey. Stepping into the future with the collegial support of each other will go far in helping us to thrive again in our profession. Remember, an adaptive person is able to refocus their mind in new directions and make choices based on their desired outcomes. If we are open to change knowing it is the set of the sail that matters, not the direction of the wind; we will successfully weather the storm of change.

As a final note, we must all keep in mind that this storm of new knowledge, technology and administrative changes has been built on the foundation of one simple act—a patient in a room with a doctor, asking for help. Together we all have worked so hard over the years learning how best to answer, and treat that patient, and together we will continue to do so.

A MESSAGE TO MEMBERS

Local Forums to Seek Physicians' Input

BY DAVID E. HAMMOND, MD

KCMS President

The KCMS Board has asked the KCMS Members to provide input on two issues through confidential surveys. Online surveys were conducted.

Survey One was seeking members' input and understanding on Maintenance of Certification challenges and KCMS' work to update Senator Peter MacGregor on the issue and challenges for physicians. Results indicated that physicians prefer to be involved in future sessions.

Communication with local officials is ongoing, but at a standstill with the summer break. The KCMS board hopes to host a forum with physician members and local legislators on challenges that disciplines have in maintenance of certification.

Survey Two was seeking members' input and understanding on the recent news stories regarding the proposed reorganization of Grand Rapids Medical Education Partners (GRMEP). Since this topic has sparked much curiosity and many suggestions, I am dedicating the remainder of my letter to it. The survey results indicated an overwhelming interest (69%) in learning more in a forum.

Grand Rapids Medical Education Partners began as Grand Rapids Medical Education Research Committee (GRMERC) in 1973 as a vehicle to coordinate MSU College of Human Medicine (MSU-CHM) education in Grand Rapids and participants included MSU-CHM, Saint Mary's Hospital, Blodgett Hospital and Butterworth Hospital. KCMS archives indicate KCMS and the Kent Medical Foundation had participated in the early stages of the development. The organization later became Grand Rapids Medical Education Committee (GRAMEC). In 2000, it was reorganized as Grand Rapids Medical Education Partners and at that time included Spectrum Health and Saint Mary's. The leadership of both organizations publicly declared that medical education is a community good that should be done in a cooperative way outside of the growing competitive rivalry health care locally. MSU-CHM continued as a member and Grand Valley was invited to participate as a partner. Ferris State University School of Pharmacy joined later. There was great pride in the community-wide collaboration around the training of future physicians. The ability to use our state-of-

the-art medical facilities as a shared learning environment was unique and served as a model for other communities across the region.

Inherent in this model were cost savings through centralized administration. The economies of scale helped to provide exceptional quality of education and a significant value for our West Michigan community.

We are concerned that this collaborative effort may disintegrate and the result may be higher costs for GME, and lead to higher costs for the community. The potential duplication of administrative functions may increase costs. These costs are transferred from training institutions and hospitals to insurers, and, ultimately, to employers and individuals.

Sometimes an investment is worth the end result; however, there has been a concerning lack of community input into whether this additional cost is a wise use of our resources.

Many of our members are involved in our community boards, committees and new initiatives. We live in a dynamic and thriving community where certain phrases are routinely used by local leaders, such as "community engagement," "collaboration," "avoid duplication," "responsible distribution of talent and resources"—especially as local business leaders and patients continue to seek affordable and accessible health care.

The lack of transparency in the GRMEP reorganization creates speculation in the process and potential outcome. The physicians in our community who have generously given of their time and talents to train our new physicians should be considered as major stakeholders as decisions are made. Hopefully, the leadership of our teaching institutions will continue to focus on the highest quality and best practices in GME. As Bill Manns, president of Mercy Health St Mary's so eloquently wrote in a letter that was shared with the Grand Rapids Business Journal, "West Michigan has a long history and strong tradition of people and organizations combining strengths for the greater good of the community."

A forum will be held in the early fall. Please feel free to invite resident physicians as well as non-member physicians and local business leaders. Watch your mail and email for your invitation.



SHARE YOUR HOLIDAY WISHES

WHILE HELPING THE KENT MEDICAL FOUNDATION RAISE FUNDS TO SUPPORT COMMUNITY PROGRAMS

Contribute to this annual campaign and your name will be listed among other donors who have helped make the annual Holiday Card possible!

CONTRIBUTIONS

Holiday Card Campaign Gifts received by November 30 will be included in the 2015 Holiday Card, which will be mailed the first week of December. You can contribute in two ways:

CHECK

Please make check payable to Kent Medical Foundation. Complete donor registration at right and mail to:

Kent Medical Foundation
233 East Fulton, Suite 222
Grand Rapids, MI 49503



ONLINE VIA PAYPAL

Go to www.kcms.org/kmf
or simply scan this QR code.

QUESTIONS?

Please contact the Kent Medical Foundation at 616-458-4157.



KENT MEDICAL FOUNDATION

Holiday Card
CAMPAIGN

DONOR REGISTRATION

YES! Count me/us in to continue the mission to assist The Kent Medical Foundation in community outreach endeavors and health promotion projects. Please find my/our check enclosed for the following amount (contribution amounts are NOT disclosed on the card):

\$1,000 \$750 \$500 \$250 \$100 \$_____ Please keep my donation anonymous.

Please print your name(s) below exactly as you would like to be presented on the Holiday Card insert.

Name(s): _____

Address: _____

Email: _____ Phone: _____

Please return to: Kent Medical Foundation | 233 East Fulton, Suite 222 | Grand Rapids, MI 49503

Contributions are tax deductible.



KENT MEDICAL FOUNDATION



Jayne Courts, MD
2015 KMF President,
Board of Trustees

Supporting Local Health and Education Projects

The Kent Medical Foundation Board met in June and began the meeting by receiving an update from the Fit Kids 360 staff regarding the exciting growth in the program and the ongoing and enthusiastic involvement of Michigan State University-College of Human Medicine student volunteers.

The program also received funding from Spectrum Health Healthier Communities which will allow continuation of their current, expanded program. They hope to reach even more at-risk students and their families with their fitness and nutrition program.

In an effort to secure KMF Records and history in a more secure fashion, the KMF Board approved hiring summer interns to scan historical documents, formal minutes, and donor records. Securing these valuable records in both electronic and hard copy (while storage room allows) will preserve critical documents of the Foundation's 54-year history.

The KMF Board is proud to launch the 2015 annual Holiday Card Project. The holiday card is sponsored by donations to the Kent Medical Foundation and is the sole fundraiser for the KMF. Your support through

annual "holiday wishes" to friends and colleagues benefits the KMF charitable giving program. The KMF Board hopes to increase awareness and encourage early donor support

by including Holiday Card Project information in this KCMS Bulletin. Please take a moment to make your gift, which will assist KMF in supporting community health initiatives and programs.

As always, the KMF Board is interested in your suggestions for fundraising and friend raising. If you or your family support health-oriented, non-profit programs that may be worthy of grant support, feel free to contact me or the KCMS/KMF Executive Director, Patricia Dalton, for information on how to apply for potential support.

Please consider contributing to the Annual Holiday Card Project. Thank you in advance for your ongoing support.

As always, the KMF Board is interested in your suggestions for fundraising and friend raising. If you or your family support health-oriented, non-profit programs that may be worthy of grant support, feel free to contact us.

Leave a Legacy

Charitable giving is an important part of the legacy you choose to leave. At this time of year, many of us are considering our year-end philanthropic support. Please consider one of the non-profit charitable organizations associated with Kent County Medical Society. Checks should be endorsed to the specific agency you wish to support (see below). You may mail these checks in care of the Kent County Medical Society Office at 233 East Fulton, Suite 222; Grand Rapids, MI 49503. Each organization will issue a charitable receipt.

Did you know that, making charitable contributions through your will allows you to support the organizations you care about, while maximizing the tax benefits to your estate? You may make a bequest to any of these charities as well. You may also do so by creating a new will, providing an amendment to your existing will or naming one of them in your living trust. Simply use the following sample language.

I give, devise, and bequeath \$ _____ or _____ % of my estate to:

- Kent Medical Foundation
- KCMS Alliance Foundation

Feel free to contact the KCMS office at 616.458.4157 with questions. As 501(c)(3) organizations, your gift is tax deductible to the extent provided by law.



INTERNS

Jordan Grennell, *GVSU*

Tina Poulias, *GRCC*

Lisa Rowan, *Hope College*

VOLUN-TEENS

and hours donated

Yellennys Bonilla

113 hours

Daniel Nicholson

78 hours

Rachel Nicholson

59 hours

Wellington

Jaramillo Troya

68 hours

Jaziel Tzintzún

144 hours

Thank You Summer Interns

A special thank you to the Summer Volun-teens and Summer Interns who helped the office staff. Summer Interns focused on archiving historic information for KCMS and the Kent Medical Foundation. The Volun-teens volunteered on behalf of the Kent Medical Foundation and community organizations such as Kids Food Basket and the Grand Rapids Public Museum.

THANK YOU ALL FOR YOUR TIME AND ENERGY!

Order Your Referral Guide Today

Referral Guides are available for \$10 each. Please contact the KCMS office at (616) 458-4157 with questions.

I would like to order _____ **Referral Guides** (\$10 each) **Payment:** I'm enclosing \$ _____

Name/Contact Person: _____

Practice Name: _____

Address: _____

City, State, Zip _____

Phone: _____ Ordered By: _____

Signature of KCMS/KCOA Member: _____

Please make check payable to Kent County Medical Society. Mail payment with order form to:
KCMS/KCOA, 233 East Fulton, Suite 222, Grand Rapids, MI 49503

Directory Changes

Please make the following changes to your Membership Directory to ensure that it is current and correct. If you have any changes you would like to make please call the office at 616-458-4157, email kcmsoffice@kcms.org, or fax the form at right to 616-458-3305.

PAGE 4

Asgeirsson, MD, Theodor
NEW office address:
West Michigan Surgical Specialists, PLC
1045 Gezon Pkwy. SW
Wyoming, MI 49509
Ph: 456-5311 Fx: 456-7955

PAGE 6

Beane, DO, Jaret A.
NEW office address:
West Michigan Surgical Specialists, PLC
1045 Gezon Pkwy. SW
Wyoming, MI 49509
Ph: 456-5311 Fx: 456-7955

PAGE 9

Borreson, MD, Daniel K.
NEW office address:
West Michigan Surgical Specialists, PLC
1045 Gezon Pkwy. SW
Wyoming, MI 49509
Ph: 456-5311 Fx: 456-7955

PAGE 14

Courts, MD, Jayne E.
NEW office address:
Mercy Health Physician Partners
1900 44th St. SE
Kentwood, MI 49508
Ph: 685-1808 Fx: 685-8099

PAGE 16

DeJong, MD, Michael J.
NEW office address:
West Michigan Surgical Specialists, PLC
1045 Gezon Pkwy. SW
Wyoming, MI 49509
Ph: 456-5311 Fx: 456-7955

PAGE 21

Foster, MD, Richard K.
"Summer" home address:
15000 Acadia Woods Rd.
Northport, MI 49670
Ph: 231-386-5977

PAGE 23

Goldberger, MD, Robert
DECEASED

PAGE 24

Green, MD, Joel A.
NEW office address:
West Michigan Surgical Specialists, PLC
1045 Gezon Pkwy. SW
Wyoming, MI 49509
Ph: 456-5311 Fx: 456-7955

PAGE 25

Hammond, MD, David E.
NEW practice name:
Forefront Dermatology
1000 East Paris Ave. SE, Ste. 214
Grand Rapids, MI 49546
Ph: 685-1808 Fx: 685-8099

PAGE 30

Jarka, MD, Robert W.
DECEASED

PAGE 31

Johnson, MD, Gregory W.
NEW office address:
West Michigan Surgical Specialists, PLC
1045 Gezon Pkwy. SW
Wyoming, MI 49509
Ph: 456-5311 Fx: 456-7955

PAGE 32

Keller, DO, Norman
NEW home fax: 451-6070
(Same as home phone)

PAGE 33

Kim, MD, Ihl
NEW home address:
2167 Ridgecrest Rd. SE, Apt 6
Grand Rapids, MI 49546

PAGE 36

Leahy, MD, Michael C.
NEW office address:
West Michigan Surgical Specialists, PLC
1045 Gezon Pkwy. SW
Wyoming, MI 49509
Ph: 456-5311 Fx: 456-7955

PAGE 38

Lukens, MD, Jack G.
DECEASED

PAGE 44

Norton, MD, Ellen
NEW home address:
2500 Breton Woods Dr. SE, Unit 5011
Grand Rapids, MI 49512

PAGE 46

Pell, DO, Mary
NEW office address:
Care Resources, PACE Program
1471 Grace St. SE
Grand Rapids, MI 49506
Ph: 913-2006 Fx: 913-2005

PAGE 47

Pool, MD, Lee R.
DECEASED

PAGE 48

Ramirez, MD, Rose M.
NEW office address:
Jupiter Family Medicine, PC
6250 Jupiter Ave., Ste. A
Belding, MI 49306
Ph: 301-2500 Fx: 301-2501

PAGE 53

Sherman, MD, Stanley R.
NEW office address:
West Michigan Surgical Specialists, PLC
1045 Gezon Pkwy. SW
Wyoming, MI 49509
Ph: 456-5311 Fx: 456-7955

PAGE 53

Shumaker, MD, Daniel B.
RETIRED

PAGE 54

Sprague, MD, William E.
DECEASED

PAGE 55

Stevens, DO, Jeffrey
NEW office address:
Spectrum Health Medical Group
Internal Medicine and Family Medicine
1900 Wealthy St. SE, Ste. 200 (MC540)
Grand Rapids, MI 49506
Ph: 267-7292 Fx: 267-7922

PAGE 59

VanderKolk, MD, Wayne E.
NEW office address:
West Michigan Surgical Specialists, PLC
1045 Gezon Pkwy. SW
Wyoming, MI 49509
Ph: 456-5311 Fx: 456-7955

PAGE 62

Wendt, Jr., MD, Vernon E.
Home address CORRECTION:
1620 Andover Rd. SE
East Grand Rapids, MI 49506

PAGE 61

Walls, MD, Clarence E.
DECEASED

Please Submit Your Directory Changes

Please submit any changes that are needed to the Membership Directory. Please print clearly. Fax (616) 458-3305 or mail completed form to the KCMS/KCOA office: 233 East Fulton, Suite 222, Grand Rapids, MI 49503.

Name: _____

Phone: _____ Email: _____

Requested Change: _____



Join Us

KCOA MEETINGS OF INTEREST

NOVEMBER 6-8, 2015

MOA AUTUMN SCIENTIFIC CONVENTION

Amway Grand Plaza, Grand Rapids

NOVEMBER 9, 2015

LEGISLATIVE COMMITTEE LUNCHEON

Masonic Center, 4th Floor | Noon

OUR MISSION:

Kent County Osteopathic Association seeks to advocate for the physicians of Kent County, advance the science and practice of osteopathic medicine, and provide an arena of osteopathic physicians to support and educate each other and their community.

Visit us

For event details, check out our website kcoa.us



ICD-10 Codes Required Starting Oct. 1

If you send claims for payment or report encounters to any health insurance company, a major change is coming Oct. 1, 2015. For all services delivered on and after Oct. 1, 2015, ICD-10 codes must be used on all electronic and paper claims. ICD-9 codes will no longer be used—in fact, Medicare and others have already announced that they will reject claims with the incorrect code set sent. The change to ICD-10, which is required under HIPAA regulations, was originally set for Oct. 1, 2013, delayed until Oct. 1, 2014 and delayed again until Oct. 1, 2015 due to industry struggles to implement the new system. Visit the MOA website to determine how ICD-10 will affect your practice, changes from ICD-9, and more.

KCOA OFFICERS & DIRECTORS

PRESIDENT

Jennifer Hemingway, DO

PRESIDENT-ELECT

Erik M. Ratchford, DO

PAST PRESIDENT

Brad A. Irving, DO

SECRETARY/TREASURER

Laura A. Tinning, DO

DIRECTORS

Ann M. Auburn, DO

Diane C. Bigham, DO

Adam T. Wolfe, DO

SPEAKER OF THE HOUSE OF DELEGATES MICHIGAN OSTEOPATHIC ASSOCIATION

Craig H. Bethune, DO

MOA DELEGATION

Bradley Clegg, DO

William Cunningham, DO

Joanne Grzeszak, DO

Norman Keller, DO

Edward Lee, DO

Gary Marsiglia, DO

Jeffrey Postlewaite, DO

Karlin Sevensma, DO

Susan Sevensma, DO

Carl Eugene Soechtig, DO

Jeffrey Stevens, DO

Adam Wolfe, DO

John Wolfe, DO

LOOK FOR YOUR 2016 DUES NOTICE SOON

Prompt payment of your KCOA dues is greatly appreciated!



PRESIDENT'S MESSAGE

ICYMI



Jennifer Hemingway, DO
KCOA President,
Board of Directors

KCOA

I hope you have been able to enjoy the final days of a beautiful summer in West Michigan. The summer months seems to go by faster than the rest of the year. Because of that I'm dedicating this news update as an issue of "ICYMI –In case you missed it", recapping some of the issues that will be facing us as we get ourselves back into the fall routine.

2015 MOA Autumn Scientific Convention

Right here! Join other West Michigan colleagues and friends from around the state in another MOA Scientific Convention. Take advantage of this accessible CME right here in downtown Grand Rapids.

17 AOA Category 1-A Credits Anticipated

November 6-8th, 2015

Amway Grand Plaza

187 Monroe Avenue NW, Grand Rapids, MI

Register by October 30, 2015 for early bird discount. www.domoa.org

CME Sessions

Friday: 1 - 5 p.m. Saturday: 8 a.m. - 6 p.m. Sunday: 7 a.m. - 12 p.m.

Submit Your Abstract

The Michigan Osteopathic Association (MOA) is currently accepting abstracts for the MOA Annual Autumn Scientific Research Exhibit (SRE) Competition that will be held on November 7, 2015 at the Amway Grand Plaza in Grand Rapids. Please encourage your colleagues (students, residents, interns, practicing physicians), to participate. The SRE submission deadline is October 23 and the competition is capped at 25, for more information please visit www.domoa.org/SRE or www.domoa.org/GR2015

MICHIGAN STATE UNIVERSITY

College of Human Medicine

Congratulations to our MSU-COM graduates

For the 15th year, the MSU College of Osteopathic Medicine ranks in the top 10 percent of all medical schools.

CONTINUED ON PAGE 16

PRESIDENT'S MESSAGE CONTINUED FROM PAGE 15

Opioid Abuse in Michigan

I had to be sure our members were able to see the MOA's focus on this topic. MOA President, Robert G. G. Piccinini, D.O. shared the following open letter regarding the Opioid Abuse issue:

Our country and state face a public health crisis. While treating patients and their pain, opioid misuse and abuse is leading to unintended consequences. This is an epidemic that cuts across all demographics and is causing hardship and suffering to our families, friends and neighbors. Misuse is leading to abuse and abuse is leading to more dangerous drug use.

As the president of the Michigan Osteopathic Association (MOA), I want our members and the communities we serve to know that during my term we will be committed to developing policies to address the issues related to the abuse of prescription drugs. Prior to the start of my term, the MOA recognized the urgency of the opioid issue and created an Ad Hoc committee dedicated to finding solutions. The objectives of the MOA solutions are as follows:

- 1. Decrease preventable deaths related to opioid and other drug-related overdose**
- 2. Improve continuity of care for patients in pain or with opioid use disorder**
- 3. Improve expertise of health care professionals in managing the acute and chronic non-cancer pain**
- 4. Limit opioid dependence**
- 5. Effectively manage opioid dependence when it occurs**
- 6. Help eliminate diversion of controlled prescriptions and illicit drug trafficking**



It is the goal of the MOA to help reduce opioid-related deaths and morbidity while we treat patients with pain and/or addiction with compassion and expertise. The MOA recognizes the importance of addressing this serious issue and we are working to develop policies to address this complex and multifaceted problem. The MOA has been a leader on issues facing the well being of our communities for generations. While this issue is tragic, I embrace the challenge and the MOA will continue to be a leader in developing policies and legislation that will create responsible opioid use policies and treat addiction issues related to opioid misuse.

Robert G. G. Piccinini
*D.O., dFACN, President,
 Michigan Osteopathic Association*



Marybeth Weber
KCMS Alliance President

Alliance Heartbeat

The KCMS Alliance took a well deserved break this summer with members tending to families and rejuvenating; travelling the world and Up North. We are back now ready to work and plan the year.



A group of us began by volunteering at IN THE IMAGE, helping neighborhood children from Grand Rapids schools pick out brand new athletic shoes to wear to school.

Beth Junewick, Karen Begrow and Jennifer Bruce have been hard at work preparing materials that will help welcome new Physician and Resident Families to Grand Rapids.

October will bring a family orchard party at Schwalliers Orchard.

The year is beginning now, so please check out the website at kcmsalliance.org and join our many philanthropic and social events.

Fundraising Grant Applications Available

The KCMS Alliance Charitable Fund Committee will select one or more charities a year to be the major recipient(s) of money raised through their annual fundraising event. Applicants must be 501c3 organizations providing services to youth within Kent County.

The Alliance Charitable Fund Committee will review data and information from organizations and their KCMSA sponsors that have submitted grant applications by the due date. Applications must demonstrate how the requested grant will benefit children. The Charitable Fund Committee will present approved applications to the KCMS Alliance Board and general membership for a final vote.

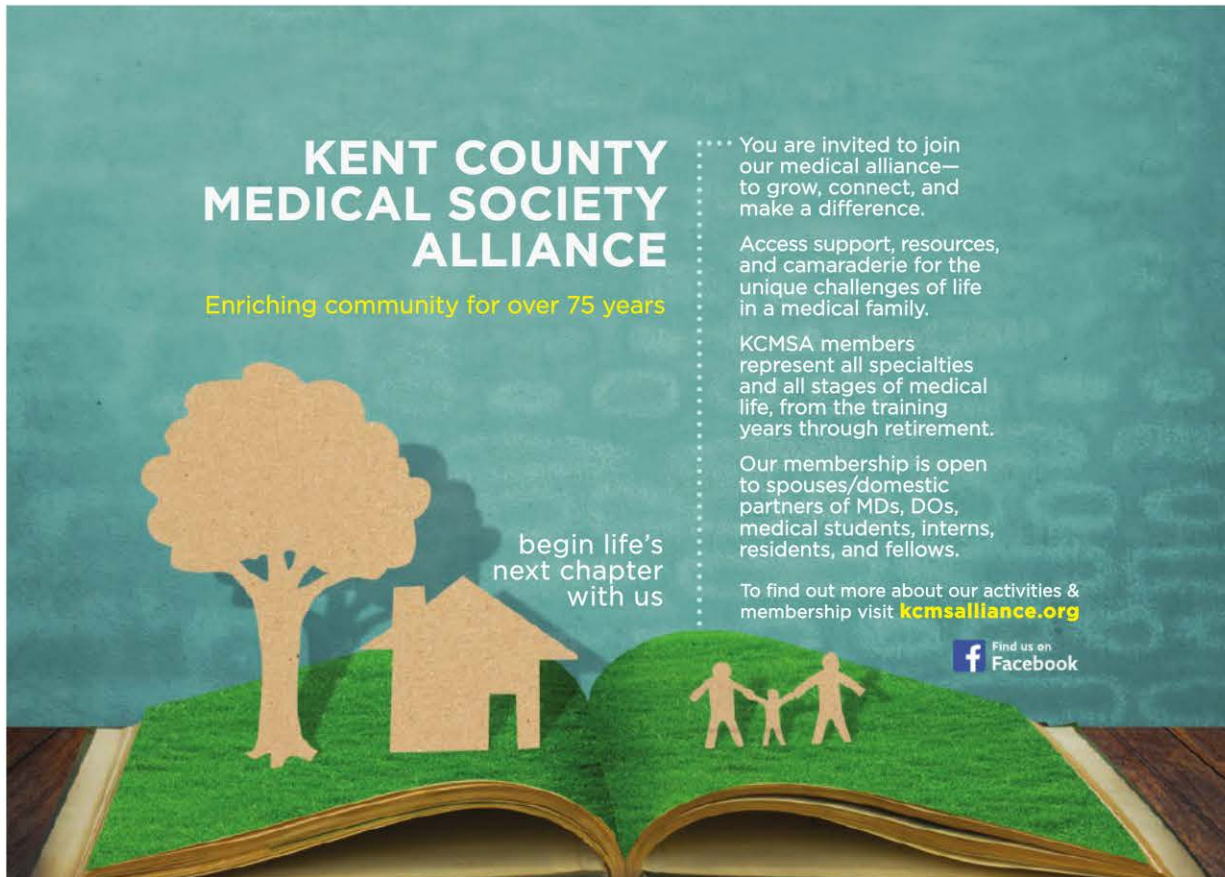
To learn more and to obtain an application, visit www.KCMSAlliance.org Click on Fundraising then Annual Grant Application.

Please note that there are TWO application forms. The first is for two Alliance members to fill out and return (no organization can submit an application without Alliance

sponsors); the second is for the charitable organization to complete and return. The organization(s) that are selected must fulfill several obligations:

1. Invite the Chairman of the KCMSA Annual Fundraiser to a fall meeting of that organization's board, so that the Chairman can explain the process of the event.
2. Provide a five-minute video of their program to be shown at the fundraising event.
3. Supply 5 to 6 individuals from their organization to volunteer at the fundraising event.
4. Report on the benefits of the money received at the following year's KCMSA Annual Spring Luncheon.

The deadline for applications for the 2017 Annual Fundraising Grant is January 8, 2016.



APPLES
PUMPKINS
CIDER & DONUTS
KIDS PLAY AREA
BARN ANIMALS
WAGON RIDES
COW TRAIN

Don't miss the fun!

fall family event

**KENT COUNTY
MEDICAL SOCIETY
ALLIANCE**

Enriching community
for over 75 years

October 24 | 3-6pm

Schwallier's Country Basket
1185 Nine Mile Road
Sparta, MI. 49345

RSVP by 10/21
Info@KCMSA.org
(provide # attending)

You are invited to join our medical alliance—to grow, connect, and make a difference.

Access support, resources, and camaraderie for the unique challenges of life in a medical family.

KCMSA members represent all specialties and all stages of medical life, from the training years through retirement.

Our membership is open to spouses/domestic partners of MDs, DOs, medical students, interns, residents, and fellows.

To find out more about our activities & membership visit kcmsalliance.org



KCMSA

MSU COLLEGE OF HUMAN MEDICINE

Welcome Interim Dean Sousa



Margaret Thompson, MD
Grand Rapids Associate Dean,
Michigan State University
College of Human Medicine

We've had a very active summer in the College of Human Medicine, beginning with Dean Marsha Rappley's announcement that she would soon be leaving for new roles as Vice President for Health Sciences at Virginia Commonwealth University and CEO of the VCU Health System. We wish Marsha all the best in her new ventures!

Succeeding Dr. Rappley is Aron Sousa, MD, who was recommended as Interim Dean of the College of Human Medicine. Dr. Sousa has served as Senior Associate Dean since 2007 and has been on our faculty since 1999. His work covers the seven community campuses across the state and he serves as a practicing physician. He has co-directed two successful LCME accreditation institutional self-studies and site visits at MSU in 2006 and 2014, and managed academics for the medical school's class expansion from 2007 -2010, where the college doubled its enrollment to 800 students. Welcome Interim Dean Sousa!

On June 18, MSU College of Human Medicine broke ground on the MSU Grand Rapids Research Center. The 162,000 square foot biomedical research facility will support a capacity of 260 members of MSU College of Human Medicine's scientific research teams. Some of the areas of research will include Parkinson's disease, Alzheimer's disease, pediatric neurology, autism, inflammation,

transplantation, cancer, genetics, and women's health and reproductive medicine. The new research center is planned to open late fall 2017.

In July, MSU and Providence-Providence Park Hospital announced the opening of the College of Human Medicine's seventh community campus, the first in Southeast Michigan.

The first cohort of medical students will start next summer with an eventual capacity of 60 third- and fourth-year students at the Southeast Michigan campus.

As we approach fall, we welcome 189 first-year students from a record applicant pool of 6,485. Our class is comprised of 97 men and 92 women, with 81 percent of the entering class Michigan residents. Of particular local note, we have 17 students entering medical school through our Early Assurance program. Locally,

we have four Early Assurance Program students from Calvin College, four from Grand Valley State University and two from Hope College. Welcome to medical school class of 2019!

On June 18, MSU College of Human Medicine broke ground on the MSU Grand Rapids Research Center. Areas of research at the 162,000 square foot biomedical research facility will include Parkinson's disease, Alzheimer's disease, pediatric neurology, autism, inflammation, transplantation, cancer, genetics, and women's health and reproductive medicine.



Mark Hall, MD, MPH

Promising Findings in the Fight Against Ebola

As of August 9, 2015, 27,929 reported confirmed, probable and suspected cases of Ebola Virus Disease (EBV) have been reported in Guinea, Liberia and Sierra Leone, including 11,283 deaths.

To date, outbreak control measures have consisted of safe and prompt burial of the dead, identifying those who may have been in contact with someone infected and monitoring their health for 21 days, separating the healthy from the sick and practicing good hygiene and maintenance of a clean environment. For healthcare providers on the front lines tending to the ill, extreme caution must be observed while donning and doffing personal protective equipment (PPE) to ensure protection against exposure to the bodily fluids of an infected individual.

Having an effective vaccine against EBV could reduce morbidity and mortality and potentially end the devastating Ebola epidemic that has severely affected the health care systems and populations in West Africa. Recently, Henao-Restrepo et. al. (Lancet online, July 31, 2015) reported preliminary findings of a phase 3 clinical trial assessing the effectiveness of recombinant, replication-component vesicular stomatitis virus-based candidate vaccine expressing the glycoprotein of a Zaire Ebolavirus (rVSV-ZEBOV). This vaccine causes a transient systemic infection after a single

injection, and produces a rapid immune response against the Ebola virus surface protein. This article summarizes the promising findings of the authors.

Methods

This open-label, cluster-randomized ring vaccination trial was conducted with cases of EBV in Basse-Guinée, Guinea. Upon laboratory confirmation of a case (detection of Ebola RNA by reverse transcriptase PCR), clusters of all primary and secondary contacts were randomly allocated 1:1 to immediate vaccination or delayed (21 days later) vaccination with rVSV-ZEBOV, administered intramuscularly in the deltoid. Primary contacts were defined as those living in the same household, were visited by the infected individual after the onset of symptoms or were in close physical contact with the patient's body or body fluids, linen or clothes. A secondary contact was defined as neighbors, family or extended family living within the nearest geographical boundary of all contact, plus household members of any high-risk contacts. The primary outcome was laboratory-confirmed EBV with onset of symptoms at least 10 days after randomization.

Having an effective vaccine against EBV could reduce morbidity and mortality and potentially end the devastating Ebola epidemic that has severely affected the health care systems and populations in West Africa.

CONTINUED ON PAGE 22





KENT COUNTY HEALTH DEPARTMENT CONTINUED FROM PAGE 21

Findings

Between April 1 and July 20, 2015, 90 clusters, with a total population of 7,561 people were included in the study. Forty-eight (48) of the clusters (4,123 people) were assigned immediate vaccination and 42 clusters (3,528 people) were assigned delayed vaccine. In the immediate vaccination group, no individuals met the primary outcome criteria compared to 16 individuals in the delayed vaccination group (from 7 clusters), resulting in a vaccine efficacy of 100% (95% CI 74.7% - 100%; $p=0.0036$). At the cluster level, with the inclusion of all eligible results, vaccine effectiveness was 75.1% (95% CI -7.1% - 94.2%). It must be noted that 9 cases of EBV occurred in the immediate vaccination group and 16 cases occurred in the delayed vaccination group within the 10 days after vaccination. The authors note, however, that no new cases of EBV were diagnosed in either group more than 6 days after vaccination.

Among vaccine recipients, 43 serious adverse events were reported with only one judged to be causally related to vaccination (a febrile episode that resolved without sequelae). To

Read More

The full version of this article can be found at <http://www.thelancet.com/pb/assets/raw/Lancet/pdfs/S0140673615611175.pdf>

assess adverse events, those vaccinated were observed for 30 minutes post-vaccination and were visited at home on days 3, 14, 21, 42, 63 and 84 post-vaccination.

Implications

The results of this interim analysis shows promise that rVSV-ZEBOV might be highly effective in preventing EBV and is most likely effective at the population level when delivered during an outbreak as post-exposure treatment of individuals at high risk of infection (ring vaccination). Despite the fact that the incidence of EBV is decreasing in the countries of West Africa, these results offer a ray of hope in the fight against a deadly disease that has ravaged nations and sent ripples of fear across the globe.



Notifiable Disease Report

Kent County Health Department
700 Fuller N.E.
Grand Rapids, Michigan 49503
www.accesskent.com/Health

Communicable Disease Section
Phone (616) 632-7228
Fax (616) 632-7085

July, 2015

Notifiable diseases reported for Kent County residents through end of month listed above.

DISEASE	NUMBER REPORTED		MEDIAN CUMULATIVE
	This Month	Cumulative 2015	Through July 2010-2014
AIDS (Cumulative Total - 970)	2	14	16
AMEBIASIS	0	3	3
CAMPYLOBACTER	8	52	41
CHICKEN POX ^a	1	10	18
CHLAMYDIA	306	2188	2098
CRYPTOSPORIDIOSIS	1	7	10
Shiga Toxin Producing E. Coli ^b	0	6	N/A
GIARDIASIS	5	38	48
GONORRHEA	79	475	405
H. INFLUENZAE DISEASE, INV	2	7	4
HEPATITIS A	0	0	2
HEPATITIS B (Acute)	0	0	3
HEPATITIS C (Acute)	0	0	1
HEPATITIS C (Chronic/Unknown)	59	321	169
INFLUENZA-LIKE ILLNESS ^c	29	27624	33331
LEGIONELLOSIS	3	5	6
LYME DISEASE	6	8	2
MENINGITIS, ASEPTIC	5	18	13
MENINGITIS, BACTERIAL, OTHER ^d	1	12	5
MENINGOCOCCAL DISEASE, INV	0	0	1
MUMPS	0	0	0
PERTUSSIS	0	14	6
SALMONELLOSIS	6	28	35
SHIGELLOSIS	2	28	3
STREP, GRP A, INV	0	25	18
STREP PNEUMO, INV	0	41	28
SYPHILIS (Primary & Secondary)	0	15	5
TUBERCULOSIS	1	10	10
WEST NILE VIRUS	0	0	0

NOTIFIABLE DISEASES OF LOW FREQUENCY

DISEASE	NUMBER REPORTED Cumulative 2015	DISEASE	NUMBER REPORTED Cumulative 2015
Kawasaki Syndrome	4		
Streptococcal Toxic Shock	2		
Guillain-Barre Syndrome	1		
Cyclosporiasis	1		
Malaria	1		

- a. Chickenpox cases are reported primarily from schools. Confirmed and probable cases are included.
- b. In November 2010, cases of *E. coli* O157:H7 were combined into the category "Shiga-toxin producing *E. coli* (STEC)"
- c. Includes "Influenza-Like Illness (ILI)" and lab-confirmed influenza. ILI cases have flu-like symptoms and are reported primarily by schools.
- d. "Meningitis, Bacterial, Other" includes meningitis and bacteremia caused by bacteria OTHER THAN *H. influenzae*, *N. meningitidis*, or *S. pneumoniae*.

Except for Chickenpox & Influenza-Like Illness, only confirmed cases (as defined by National Surveillance Case Definitions: <http://www.cdc.gov/nndss/script/casedefDefault.aspx>) are included.
Reports are considered provisional and subject to updating when more specific information becomes available.

KCCHD



PRSRT STD
U.S. POSTAGE
PAID
Traverse City, MI
Permit No. 29

Kent County Medical Society
Kent County Osteopathic Association
233 East Fulton, Suite 222
Grand Rapids, MI 49503



KCMS SOCIAL 9.21.15 THE B.O.B.



JOIN US

Enjoy cocktails, hors d'oeuvres
and art at the KCMS Member
Fall Social and ArtPrize
Sneak Peek.

MONDAY, SEPTEMBER 21, 2015

6:00 pm

EVE @ THE B.O.B.
20 Monroe Ave NW
Grand Rapids, MI 49503

RSVP
(616) 458-4157 or www.kcms.org